

HOW TO BUILD A  
MR. WINTER  
WALK-IN COOLER  
OR FREEZER  
WITH A FLOOR

# TABLE OF CONTENTS

<b>3</b>	<b>Introduction</b>
<b>4</b>	<b>Inspecting and Handling Your Panels</b>
<b>6</b>	<b>Preparing Your Site</b>
<b>7</b>	<b>Assembling Your Floor Panels</b>
<b>9</b>	<b>Assembling Your Wall, Door &amp; Ceiling Panels</b>
<b>15</b>	<b>Post-Assembly Finishes</b>

# INTRODUCTION

Looking to build a Mr. Winter walk-in cooler or freezer?

This step-by-step guide for building a **walk-in cooler or freezer with a floor** is going to show you how to do just that.

Before you grab your hex wrench and get started, it's important you learn how to locate your assembly drawing, handle your panels correctly, and prepare your site.

Sounds like a lot? Don't worry. The step-by-step instructions laid out in this guide will help you build your box in no time.

One important disclaimer before we dive in...

**All electrical and refrigeration work should be completed by a licensed and insured electrician and refrigeration contractor.**

Alright, let's get started.

The process of assembling a Mr. Winter walk-in cooler or freezer with a floor is broken down into 5 parts:

1. Inspecting and Handling Your Panels
2. Preparing Your Site
3. Assembling Your Floor Panels
4. Assembling Your Wall, Door, and Ceiling Panels
5. Post-Assembly Finishes

# INSPECTING AND HANDLING YOUR PANELS

Take time to inspect the parts and equipment included in your shipment. Make sure the order number on the boxes and panels match the order number on your invoice.

If you discover damaged parts or equipment, take photos and make a note of the damage on your delivery ticket. Contact your point of sale immediately for further instructions.

Each panel is individually labeled as "wall", "floor", and "ceiling".

The assembly drawing included with your shipment, generally found inside the door package, demonstrates the panel layout and shows where each panel goes. This drawing will serve as a reference throughout the assembly process. Keep it handy.

When handling panels, keep them flat and avoid resting them on the edges of the corners to minimize the possibility of damaging them. Stack the panels on an elevated platform if the ground is wet and cover them with waterproof sheathing if you will be storing them outside.

**Use 2 to 3 persons during assembly to avoid mishandling your panels.**

# INSPECTING AND HANDLING YOUR PANELS

Here is a list of the tools and accessories you will need to complete assembly:

- Hex wrench (included) or power drill (not included)
- Vinyl caps for cam hole locks (included)
- Door threshold (included)
- Level (not included)
- Measuring tape (not included)
- Rubber mallet (not included)
- Hammer (not included)
- Ladder (not included)
- Chalk line (optional - not included)

# PREPARING YOUR SITE

Site preparation is key to properly building your walk-in cooler or freezer. Make sure the floor space allotted for your box is level and swept clean of dirt and debris.

An uneven floor could result in a faulty assembly with doors and panels not sealing properly. If your floor is not level, you will need to use shims to make it level.

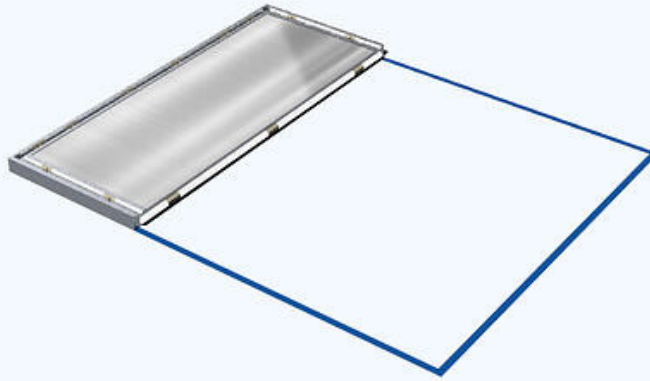
If you are building your box inside, adjacent to a wall, leave 3 to 5 inches of space in every direction to allow for proper ventilation.

## *Optional Pro Tips:*

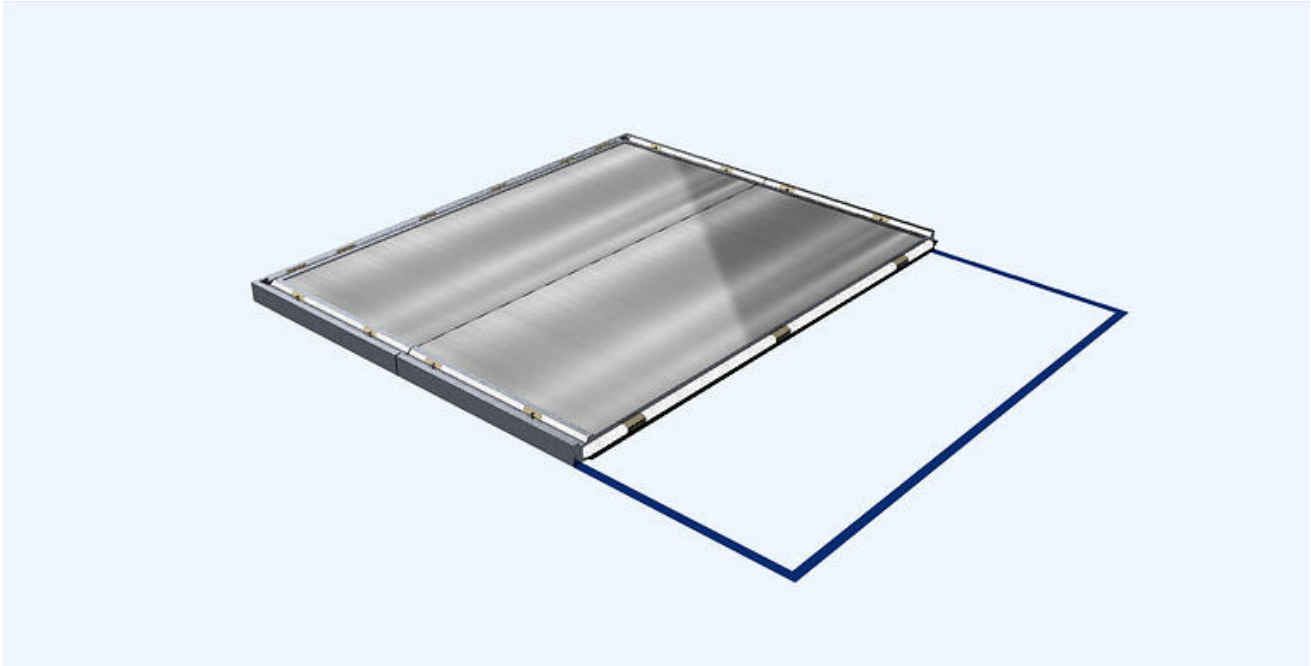
- Using the assembly drawing as a reference, measure and mark where the panels will go by outlining the perimeter of your box with a chalk line. Use a right angle square or measure diagonally in both directions to ensure the measurements match and all corners are at a 90° angle.
- We recommend placing polyethylene sheeting on your existing floor underneath your box's floor panels to serve as a vapor barrier and keep ground moisture at bay.

# ASSEMBLING YOUR FLOOR PANELS

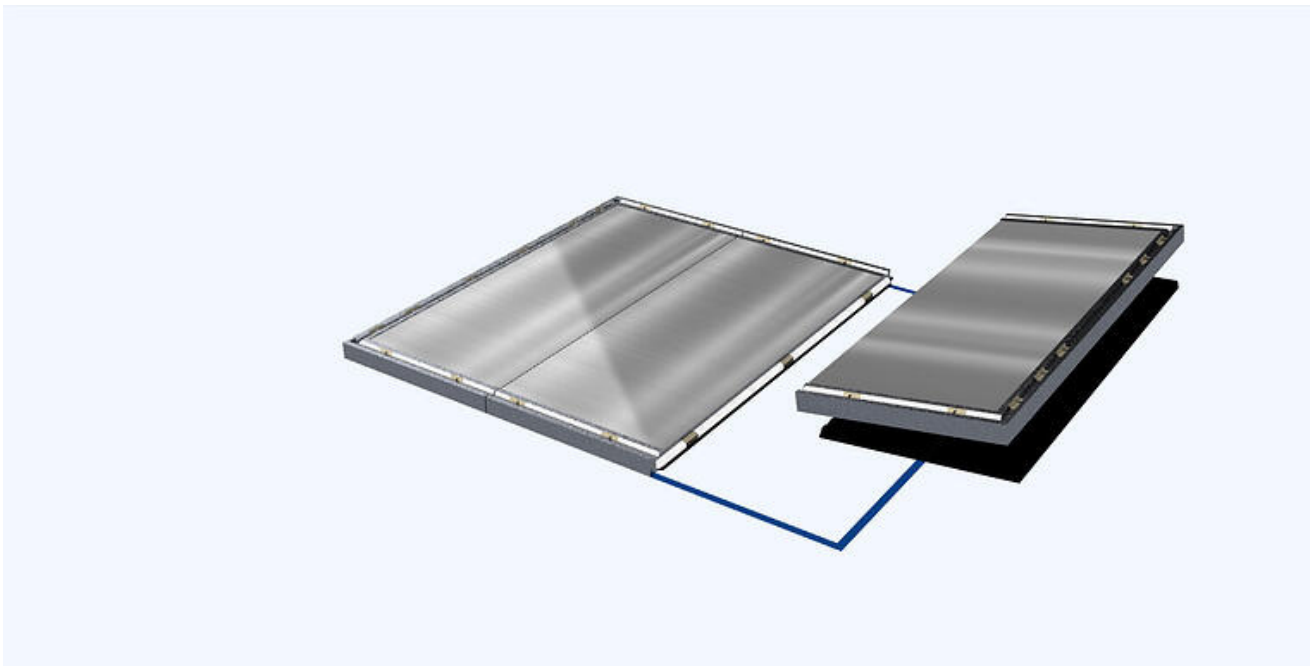
**Step 1:** Lay the floor end section down in the rear of your box as per your assembly drawing. Make sure the panel is level throughout.



**Step 2:** Place the next floor panel section into position as per your assembly drawing. Make sure the edges are flush and the floor panels remain level before fastening the floor panels using a power drill or the hex wrench provided.



**Step 3:** Continue assembling floor panels until the last floor panel is in place, which must be an end section.



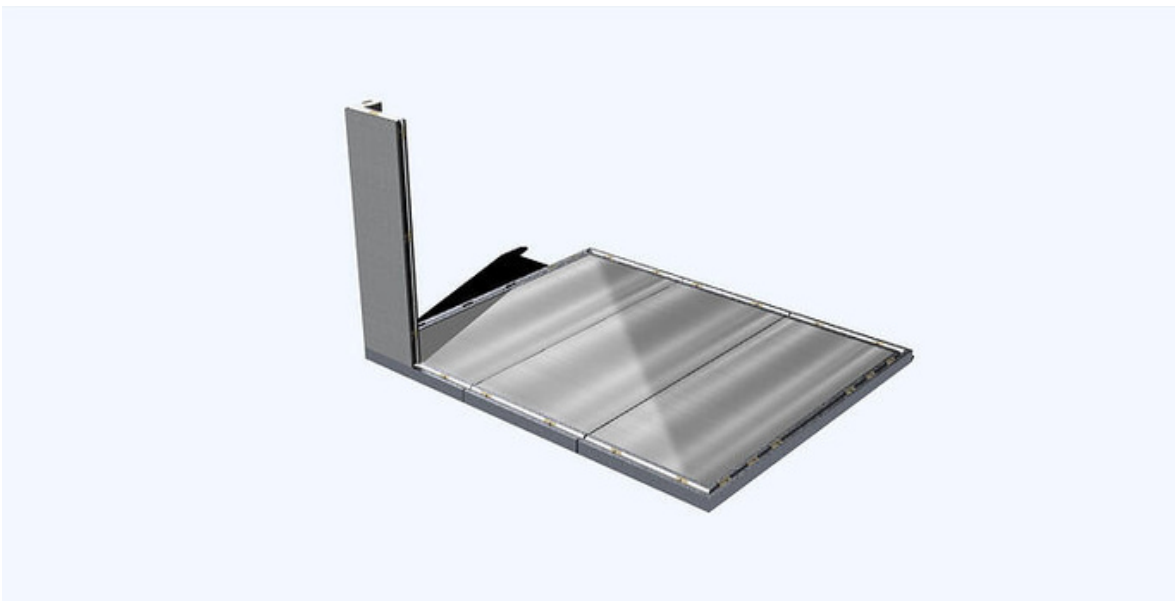


# ASSEMBLING YOUR WALL, DOOR & CEILING PANELS

Save valuable time by reviewing the following "*pro tips*" before assembling your wall, ceiling, and door panels.

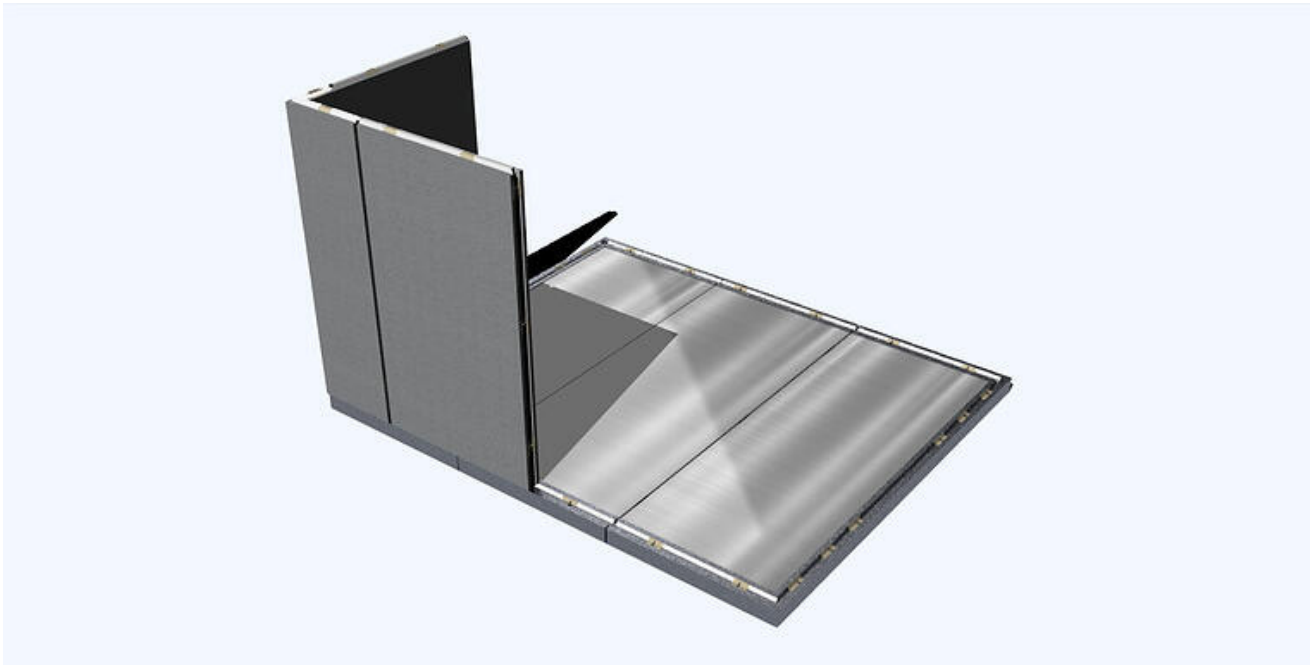
- A suspended support system is necessary for ceiling panels longer than 14 feet. Supports should be installed as per the assembly drawing provided by the manufacturer.
- Use at least two persons when handling and assembling the door panel to avoid mishandling it. **Do not remove the door from the door jamb** and keep the door closed and locked until full assembly is complete.

**Step 1:** Start with a corner wall panel in the rear of your box. Place it evenly with the perimeter of your floor base and partially fasten the cam lock to the floor panel. Do not fasten the cam lock completely.



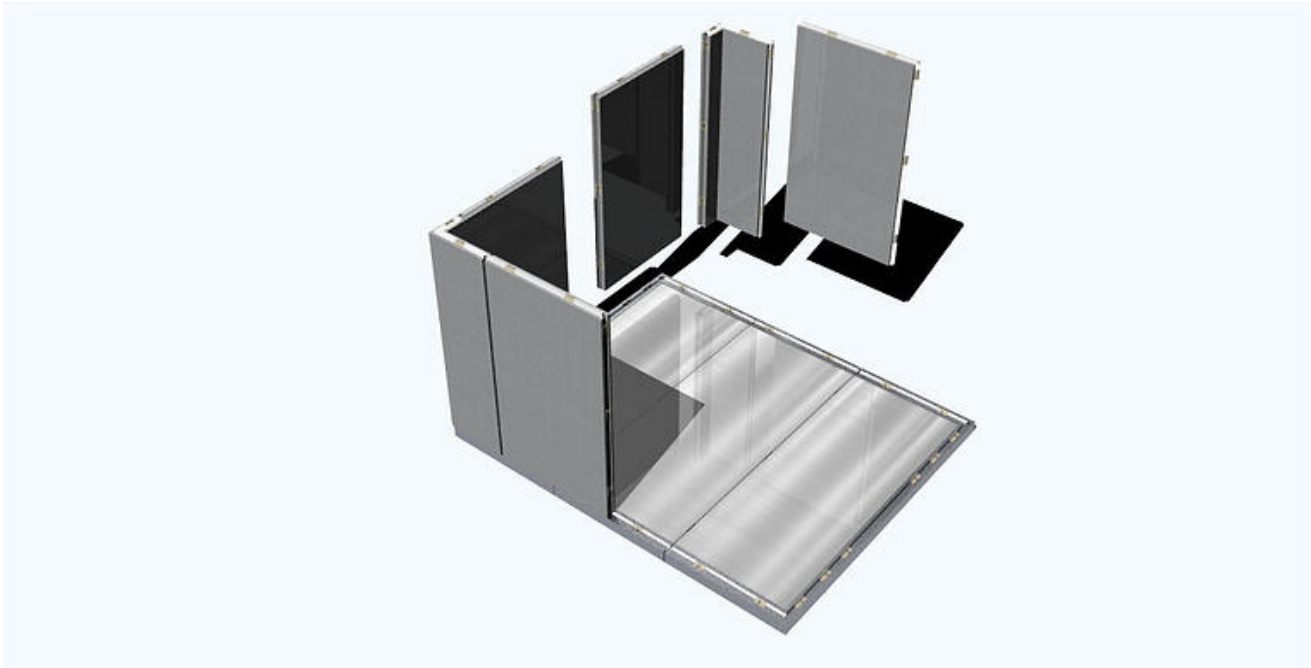
**Step 2:** Place a wall panel on each side of the corner panel and firmly fasten the wall panels to the corner panel using a hex wrench or power drill. Make sure the top of the panels are flush and level before firmly fastening the cam locks.

Partially fasten the bottom of the wall panel to the floor panel. Do not fully fasten the cam lock. This allows flexibility to level the top of the wall panels once all panels have been assembled.

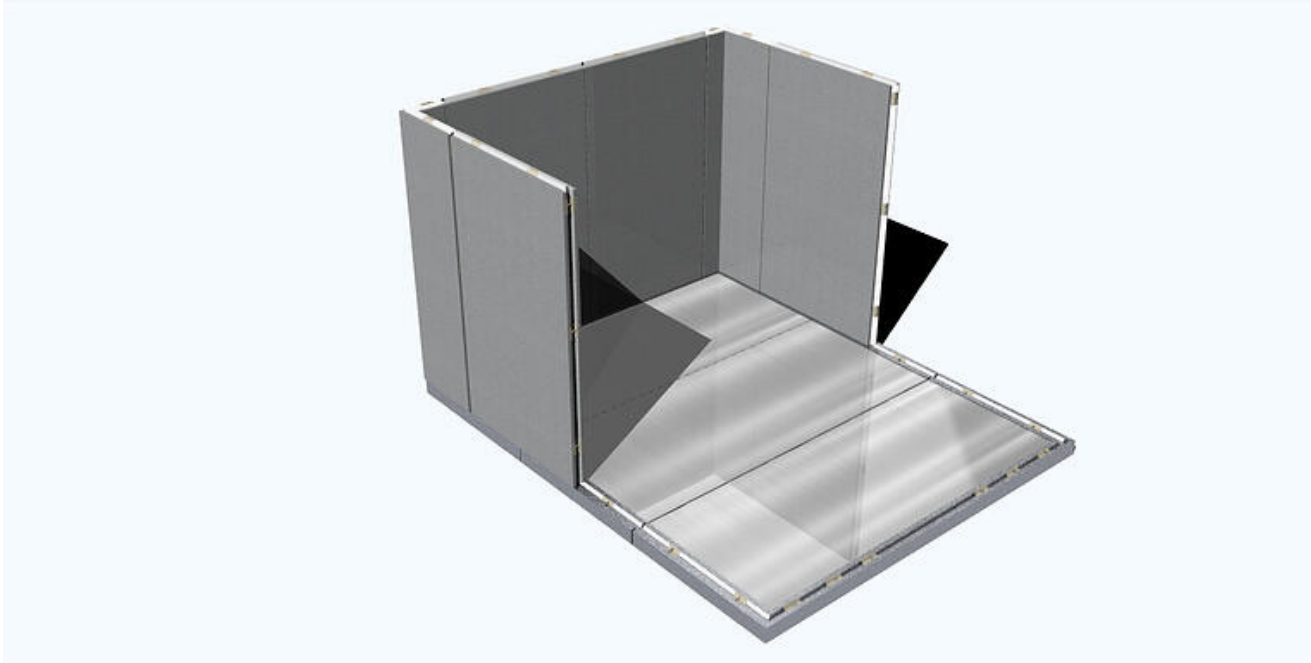


**Step 3:** Continue assembling wall panels in the direction of the other rear corner as per your assembly drawing. Work your way around the box as per the 3D rendering on the next page. This provides stability as you build your box.

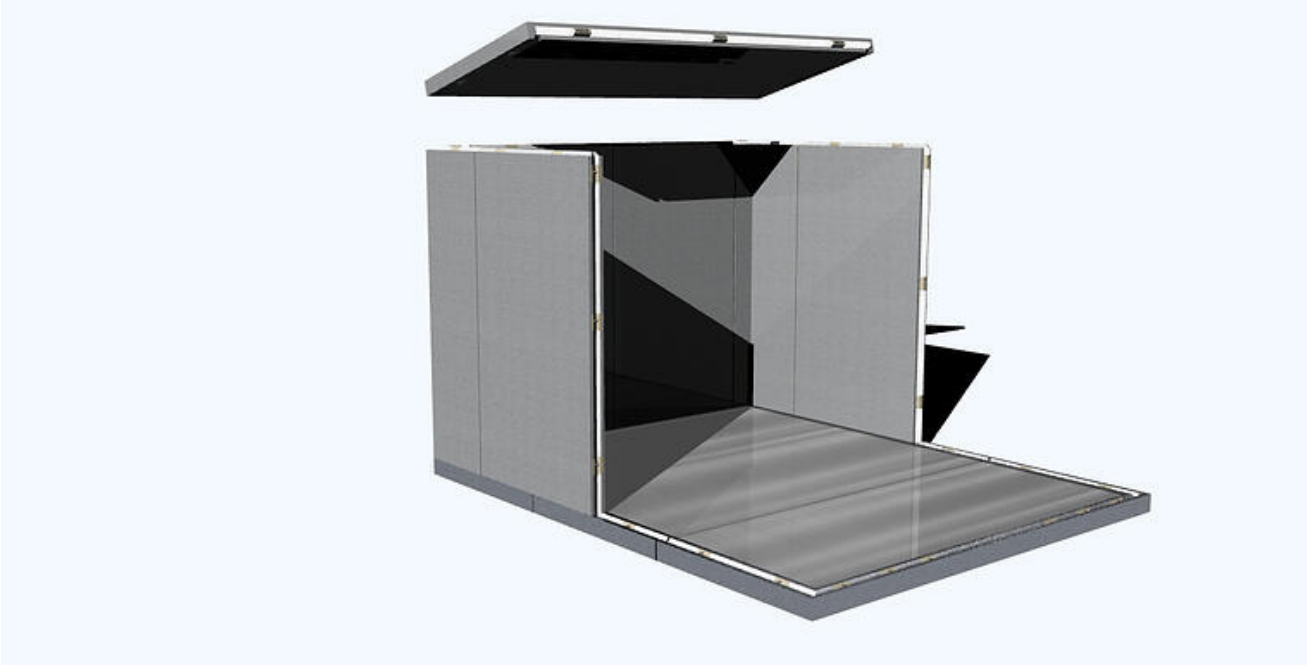
Firmly fasten each wall panel to its neighboring wall panel using a hex wrench or power drill. Make sure the top of the panels are flush and level before firmly fastening the cam locks.



Your box should look similar to this:



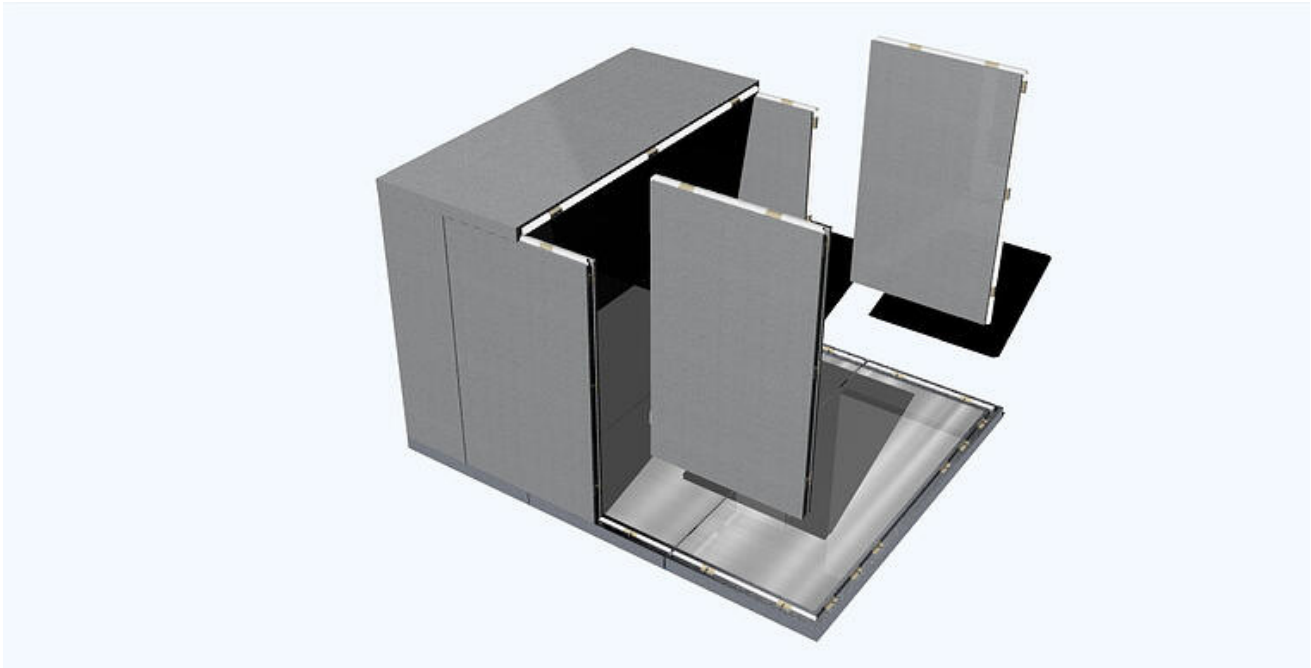
**Step 4:** Assemble your first ceiling panel. Start by aligning the end ceiling panel with the corners of the wall panels. The tongue-n-groove will hold the ceiling panel in place.



**Step 5:** Once the first ceiling panel is in place, continue assembling wall panels on each side of the box as per your assembly drawing.

Firmly fasten the top of the wall panels to their neighboring wall panels using a hex wrench or power drill. **Make sure the top of the panels are flush and level before firmly fastening the cam locks.**

Partially fasten the bottom of the wall panel to the floor panel. Do not fasten the cam lock completely.

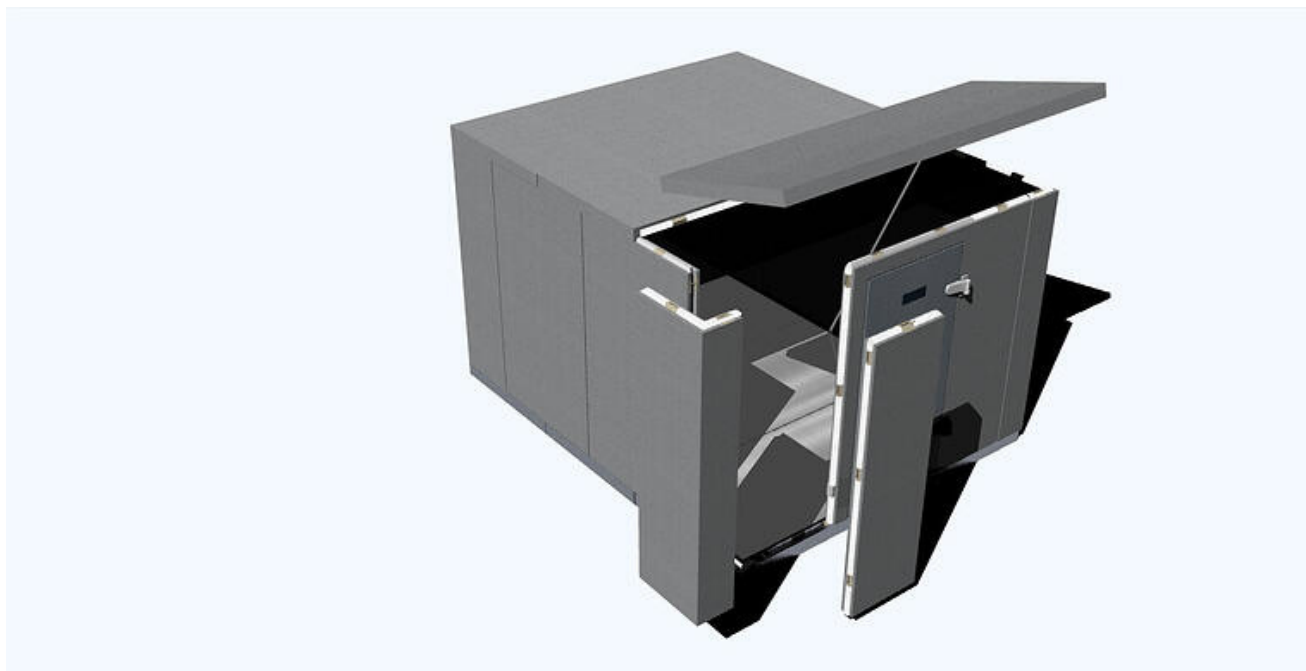


**Step 6:** Assemble the next ceiling panel once your next set of wall panels is in place, aligning the ceiling panel with the end ceiling panel you assembled in step 4 and the wall panels you assembled in step 5.

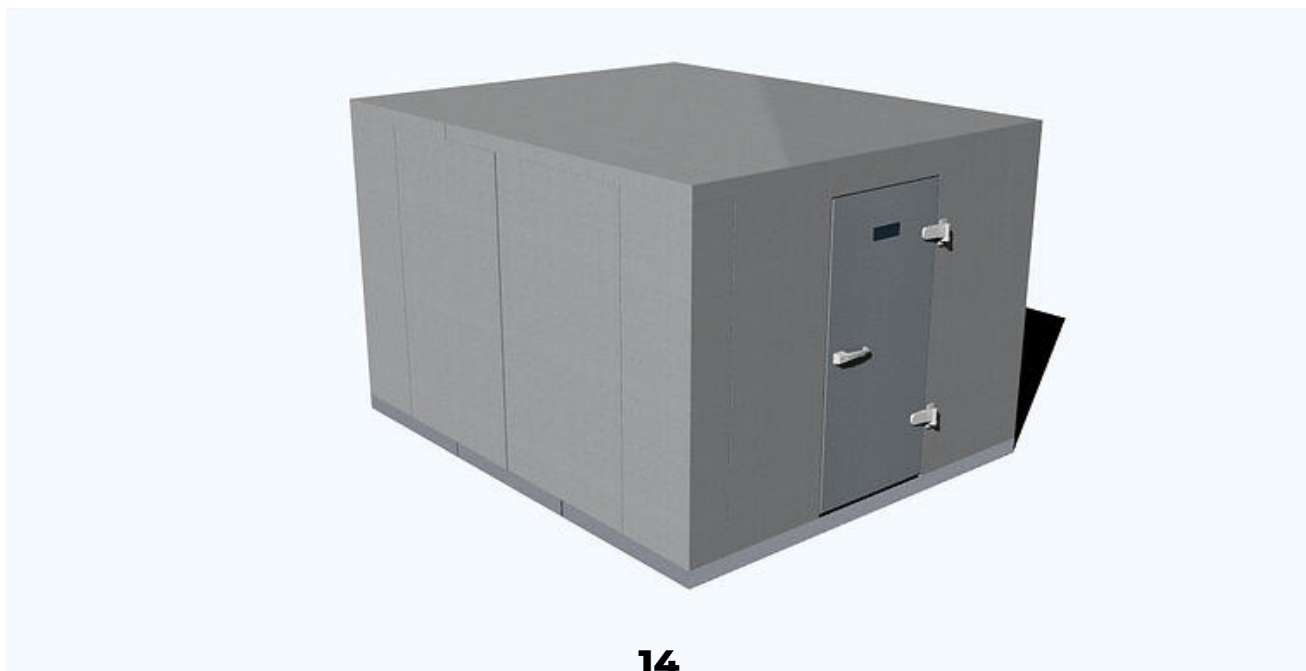
Secure the ceiling panels by **firmly fastening the ceiling panel cam locks along the center seam.**



**Step 7:** Continue assembling wall panels and ceiling panels as per your assembly drawing. The last wall panel assembled should be a front corner panel.



**Step 8:** Firmly fasten the top of the wall panels to the ceiling panels and the bottom of the wall panels to the floor panels once all your panels are assembled, level, and flush at the top. Your assembled walk-in cooler or freezer should look similar to the rendering below.



# POST-ASSEMBLY FINISHES

**Step 9:** Remove the protective vinyl from the floor panels.

**Step 10:** Insert the protective vinyl caps in the cam lock holes.

**Step 11:** Secure the door threshold to the floor panel

Congratulations! Your Mr. Winter walk-in cooler or freezer assembly is now complete. Please contact (800) 327-3371 or [adrian@mrwinterinc.net](mailto:adrian@mrwinterinc.net) if you have any questions.

# YOU DON'T HAVE TO WAIT MONTHS FOR A NEW WALK-IN COOLER OR FREEZER ANYMORE

Start keeping perishables fresh in as little as 4 weeks.

It's unacceptable to expect small businesses - the lifeblood of the American economy - to wait months for a new walk-in cooler or freezer when they need cold storage solutions today.

At [Mr. Winter](#), we understand how challenging starting and operating a restaurant, convenience store, ice creamery, brewery, bakery, or flower shop can be.

Wintelligent® - our new line of modular, foamed-in-place walk-in coolers and freezers - helps small businesses in need of cold storage start keeping perishables fresh in 4 weeks, not 4 to 6 months.

When you buy a [Wintelligent®](#) with us, you get:

- A 10-year warranty on panels, 1-year warranty on refrigeration, and 1-year warranty on hardware
- The walk-in cooler or freezer delivered to its final location, ready to be assembled
- To keep perishables fresh in less than 4 weeks

You don't have to waste months of your business's precious life waiting for a walk-in cooler or freezer of dubious quality.

[Get a quote](#) for a new Wintelligent® today and start keeping perishables fresh ASAP!

[GET A QUOTE](#)