

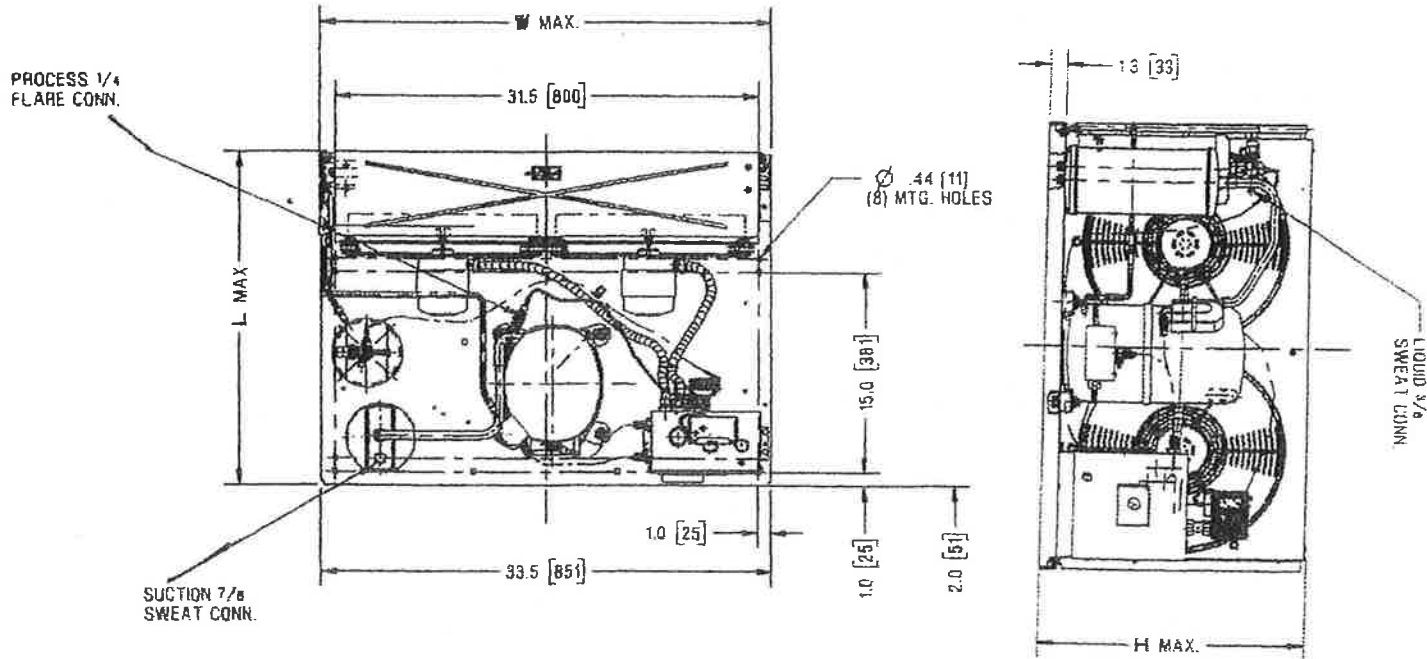


AWA9518ZXTXM

# Tecumseh Hermetic Condensing Units

January 2003

Model: AWA9518ZXTXM (2C2134-9) R404A 2 HP AIRCOOLED



NOTE: DIMENSIONS = INCHES (MILLIMETERS)

Model	Dimensions,"				Line Connection*		Pumpdown 90 °F 90%	Air CFM	Oil Ch. Oz.	Gr. Wt. Lbs.
	L	W	H	CH	Suction	Liquid				
AWA9518ZXTXM	25.0	33.48	19.5	14.6	7/8" S	3/8" S	13.8	1525	54	150

\*F= Flare, S= Solder, RF or RS = Rotolock with Flare or Solder Connections. C= Compression Fitting  
 Factory charge: 20 PSIG Nitrogen – **MUST BE EVACUATED**

## 60 Hz Performance

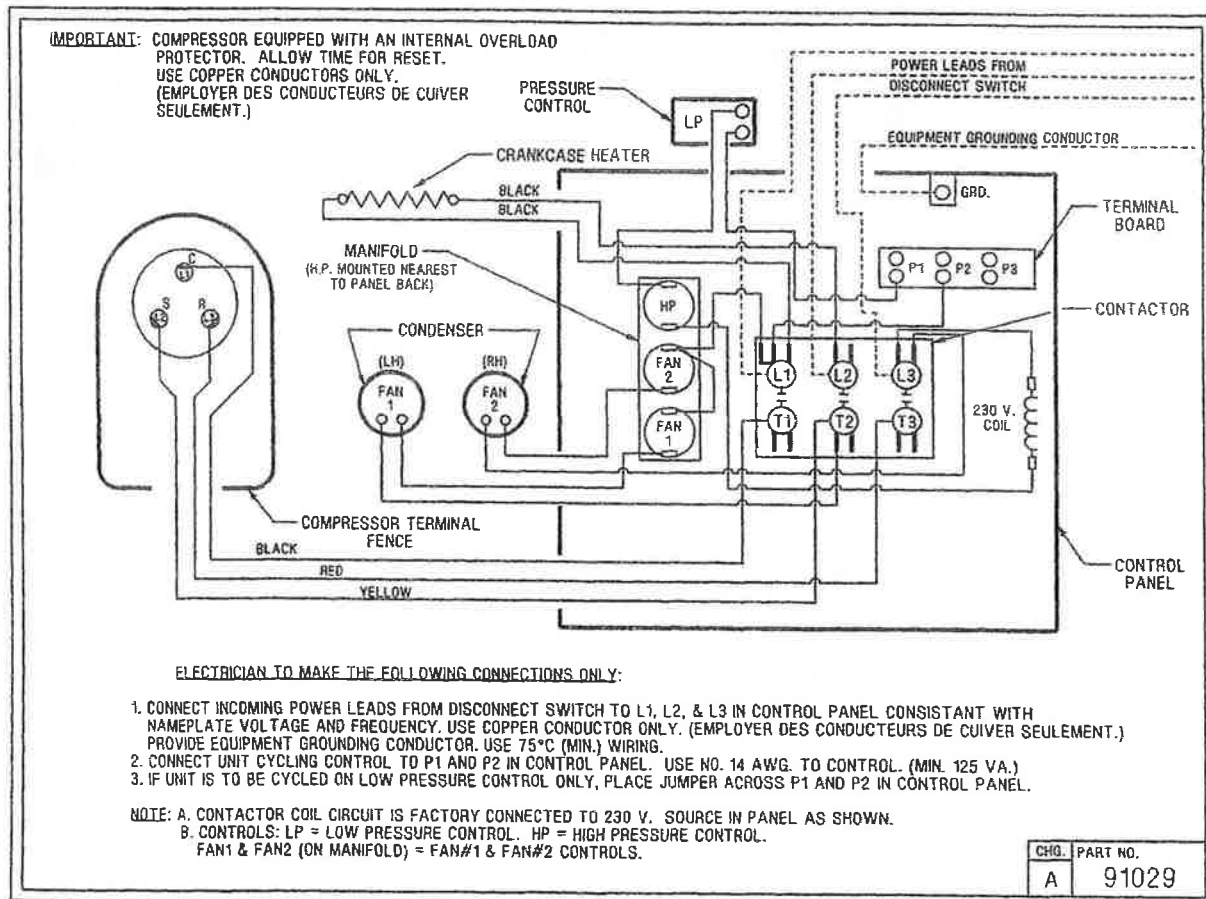
Evaporator		90 °F			100 °F			110 °F		
T. °F	PSIG	BTUH	Watts	Head	BTUH	Watts	Head	BTUH	Watts	Head
-10	23.6	8659	1970	238	7287	1933	271	5874	1871	308
0	32.6	11392	2262	248	9822	2252	281	8221	2223	319
5	37.7	12952	2408	253	11255	2410	287	9542	2398	325
10	43.2	14642	2553	260	12800	2569	293	10962	2573	331
15	49.1	16461	2699	266	14456	2726	300	12480	2747	338
20	55.4	18409	2844	273	16224	2883	307	14096	2920	345
30	69.6	22694	3135	289	20091	3196	323	17624	3264	361
35	77.2	25030	3280	298	22192	3352	331	19536	3435	369
40	85.5	27495	3425	307	24403	3507	340	21546	3605	378
45	94.3	30090	3570	316	26726	3662	350	23654	3775	387

Return gas temp. 40°F, 5°F sub cooling

Date: January 2003  
 Unit Catalog Update  
 NEW

**SPECIFICATIONS**    **AWA9518ZXTXM**  
 Nominal Voltage    230/200-3  
 Unit B/M            2C2134-9  
 Voltage Range      253 to 180  
 Min. Circuit Ampacity    15.4  
 Max. Fuse Size (Amps) 25  
**Compressor Model**    **AWA9514ZXT**  
 Comp. Bill of Material   AW617RT-120  
 RLA/LRA            10.0/63.4  
 ESP Overload        Internal  
 Control Panel        AC1390-6  
 Fan Switch (s)        84096-1  
                               84096-2  
 High Pressure Switch   84095-2  
 Control                84026-5 (LP)  
 Contactor            91014 (30AMP-3PH.230V)

Fan Motor (OEM)        810S050A99  
 Fan RLA                1.30 RLA  
 Replacement Motor    TFM502  
 Fan Blade              51568 (2 req)  
 Shroud                70648-2  
 Condenser             K42-17  
 Fan Guard              70831 (2 req)  
 Receiver Tank         51081-1  
 Receiver Tank Valve    31581-1 (3/8" S) RL  
 O' Ring Gasket        30334  
 Process Valve         31583-1 (1/4" F PV)  
 Optional Outdoor Enclosure   TP-181D  
 Crankcase Heater (If Inc)   91022-1  
 Accumulator           TK00042000  
 Unit Drawing           SU1918-6  
 Schematic or Elect. Drawing   91029



Some parts listed may be optional or listed as replacement parts.