



AWA9514ZXTXM

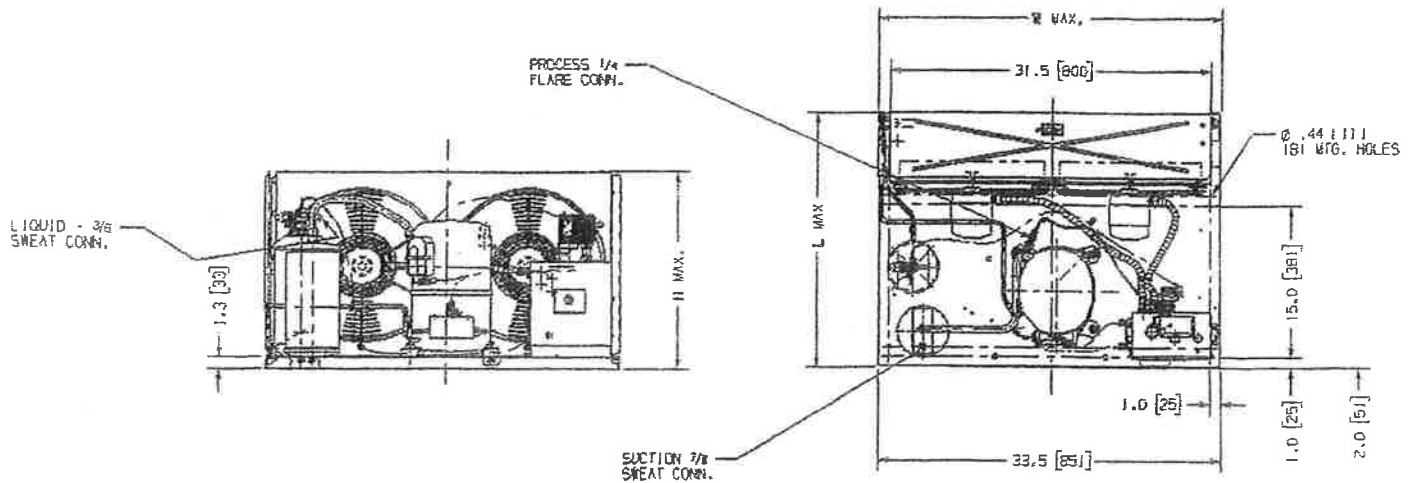
Tecumseh Hermetic Condensing Units

January 2003

Model: AWA9514ZXTXM (2B3239-9) R404A

1 3/4HP

AIRCOOLED



NOTE: DIMENSIONS = INCHES (MILLIMETERS)

Model	Dimensions,"				Line Connection*		Pumpdown	Air	Oil Ch.	Gr. Wt.
	L	W	H	CH	Suction	Liquid	90 °F 90%	CFM	Oz.	Lbs.
AWA9514ZXTXM	25.0	33.48	19.5	14.6	7/8"S	3/8"S	13.8	1807	54	150

*F= Flare, S= Solder, RF or RS = Rotolock with Flare or Solder Connections, C= Compression Fitting
 Factory charge: 20 PSIG Nitrogen – **MUST BE EVACUATED**

60 Hz Performance

Ambient Temps										
Evaporator		90 °F			100 °F			110 °F		
T, °F	PSIG	BTUH	Watts	Head	BTUH	Watts	Head	BTUH	Watts	Head
-10	23.6	6449	1623	241	5254	1557	273	4681	1548	311
0	32.6	8533	1859	252	7189	1827	285	6226	1814	322
5	37.7	9744	1978	259	8305	1961	292	7149	1949	328
10	43.2	11068	2096	265	9520	2094	299	8172	2086	335
15	49.1	12504	2214	273	10834	2227	306	9296	2225	342
20	55.4	14053	2332	280	12246	2360	314	10520	2365	350
30	69.6	17489	2569	297	15368	2622	332	13270	2651	367
35	77.2	19376	2687	306	17076	2753	341	14795	2797	377
40	85.5	21375	2805	315	18884	2882	350	16421	2944	387
45	94.3	23487	2922	325	20790	3012	360	18147	3093	398

Return gas temp. 40°F, 5°F sub cooling

Date: January 2003
 Unit Catalog Update
 NEW

SPECIFICATIONS **AWA9514ZXTXM**

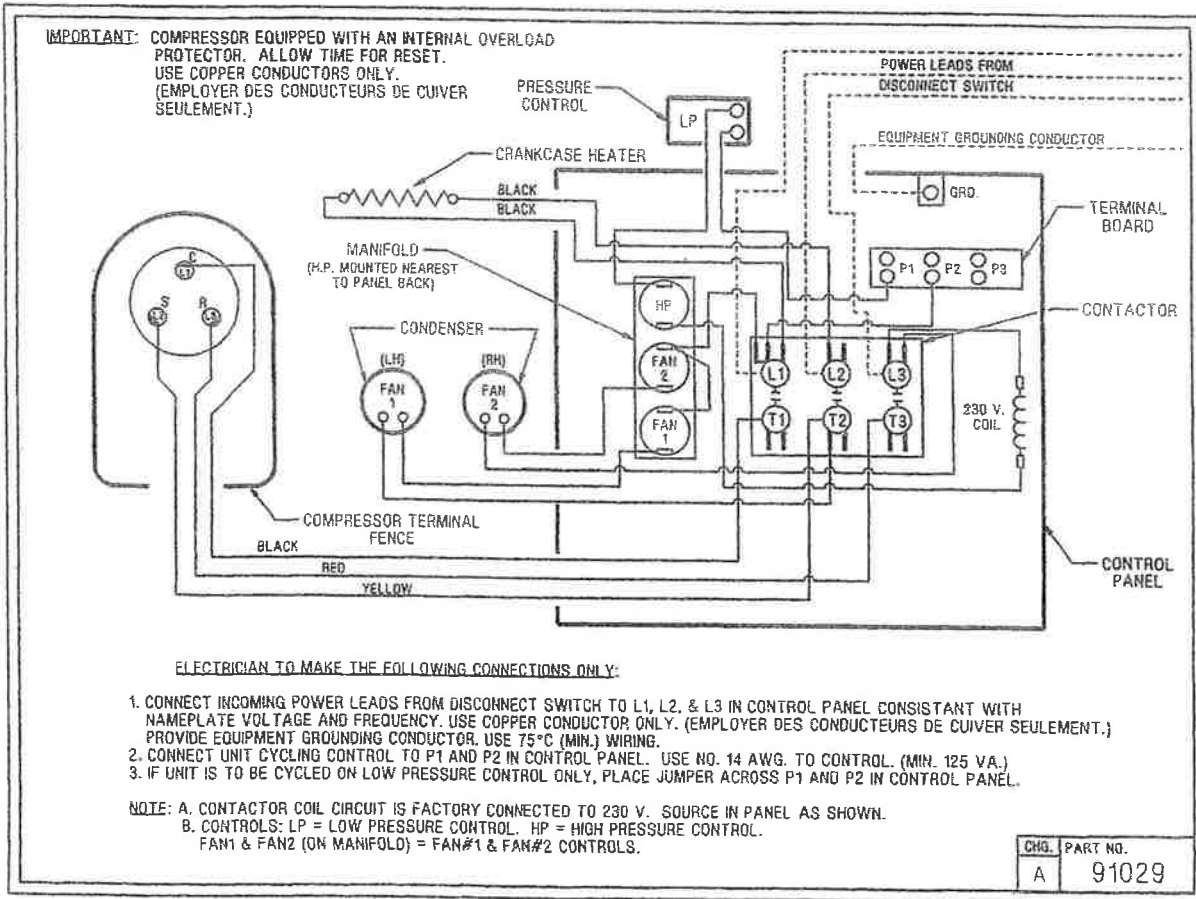
Nominal Voltage 230/200-3
 Unit B/M 2B3239-9
 Voltage Range 253 to 180
 Min. Circuit Ampacity 12.6
 Max. Fuse Size (Amps) 20

Compressor Model **AWA9512ZXT**

Comp. Bill of Material AW611ST-120
 RLA/LRA 7.8/50.0
 ESP Overload Internal
 Control Panel AC1390-6
 Fan Switch (s) 84096-1
 84096-2

High Pressure Switch 84095-2
 Control 84026-5 (LP)
 Contactor 91014 (30AMP-3PH.230V)

Fan Motor (OEM) 810S050A99
 Fan RLA 1.30 RLA
 Replacement Motor TFM502
 Fan Blade 51568 (2 req)
 Shroud 70648-2
 Condenser K42-13
 Fan Guard 70831 (2 req)
 Receiver Tank 51081-1
 Receiver Tank Valve 31581-1 (3/8" S) RL
 O' Ring Gasket 30334
 Process Valve 31583-1 (1/4" F PV)
 Optional Outdoor Enclosure TP-181D
 Crankcase Heater (If Inc) 91022-1
 Accumulator TK00042000
 Unit Drawing SU1918-2
 Schematic or Elect. Drawing 91029



Some parts listed may be optional or listed as replacement parts.