



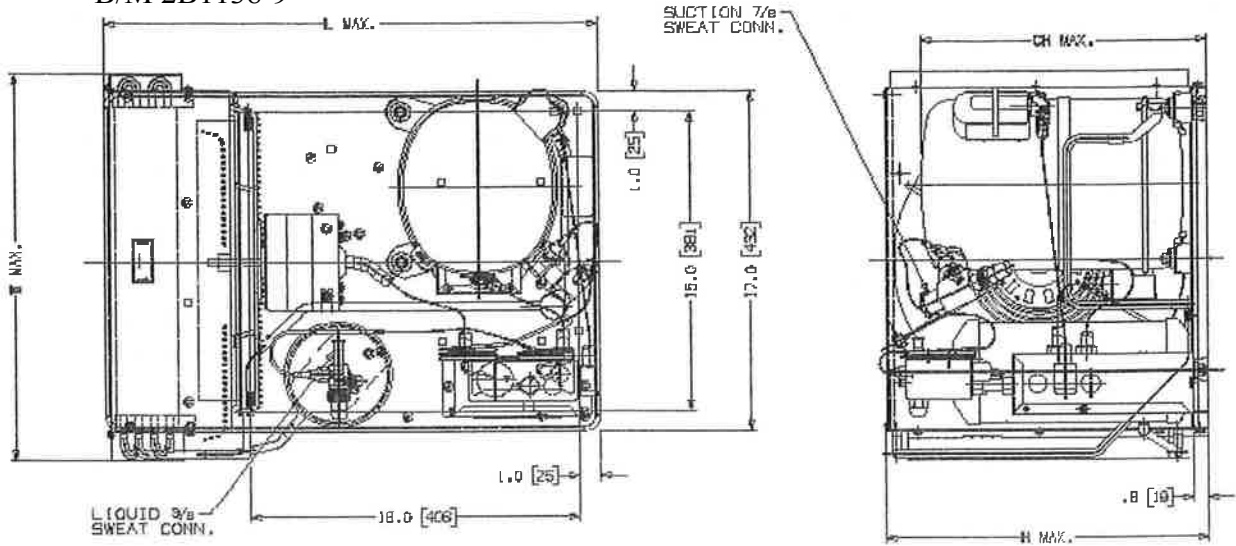
Tecumseh Products Company Hermetic Condensing Units

Model: AWA9511ZXNC
B/M 2B1138-9

R-404A

1 ¼ HP

AIRCOOLED



Note: Dimensioning = Inches [mm]

| Model | Dimensions, inches | | | | Line Connection* | | Pumpdown | Air | Oil Ch | Gr. Wt. |
|-------------|--------------------|------|------|------|------------------|---------|------------|------|--------|---------|
| | L | W | H | CH | Suction | Liquid | 90% @ 90°F | SCFM | cc | Lbs. |
| AWA9511ZXNX | 24.0 | 19.4 | 16.2 | 15.6 | 7/8" RF | 3/8" RF | 11.6 lbs | 754 | 1141 | 130 |

* F = Flare, S = Solder, RF or RS = Rotolock with Flare or Solder Connections, C = Compression Fitting
 Factory charge: 20 PSIG Nitrogen – **MUST BE EVACUATED**

60 Hz Performance

| Evaporator | Ambient Temperatures | | | | | | | | | | | | | | | | | |
|------------|----------------------|-------|----------|-------|------|--------|----------|-------|------|--------|-----------|-------|------|--------|-----------|-------|------|--------|
| | | | 80 deg F | | | | 90 deg F | | | | 100 deg F | | | | 110 deg F | | | |
| | F | PSI | BTUH | Watts | Head | Cond T | BTUH | Watts | Head | Cond T | BTUH | Watts | Head | Cond T | BTUH | Watts | Head | Cond T |
| -10 | 23.2 | 5958 | 1253 | 213 | 92 | 4917 | 1224 | 243 | 101 | 4695 | 1243 | 274 | 109 | 3716 | 1146 | 310 | 119 | |
| -5 | 27.5 | 6780 | 1335 | 220 | 94 | 5716 | 1318 | 250 | 103 | 5249 | 1330 | 282 | 112 | 4203 | 1253 | 317 | 121 | |
| 0 | 32.1 | 7686 | 1419 | 227 | 96 | 6585 | 1413 | 257 | 105 | 5886 | 1420 | 290 | 114 | 4769 | 1361 | 325 | 122 | |
| 5 | 37.0 | 8676 | 1507 | 236 | 98 | 7523 | 1511 | 266 | 107 | 6605 | 1515 | 298 | 116 | 5413 | 1472 | 333 | 124 | |
| 10 | 42.4 | 9750 | 1596 | 245 | 101 | 8529 | 1610 | 275 | 109 | 7407 | 1612 | 308 | 118 | 6135 | 1584 | 342 | 126 | |
| 15 | 48.2 | 10908 | 1689 | 254 | 103 | 9605 | 1712 | 284 | 112 | 8292 | 1714 | 318 | 120 | 6936 | 1699 | 352 | 128 | |
| 20 | 54.5 | 12150 | 1784 | 265 | 106 | 10750 | 1815 | 295 | 114 | 9259 | 1819 | 328 | 123 | 7816 | 1815 | 362 | 130 | |
| 25 | 61.2 | 13476 | 1881 | 276 | 108 | 11964 | 1919 | 306 | 117 | 10310 | 1927 | 340 | 125 | 8774 | 1933 | 373 | 133 | |
| 30 | 68.4 | 14886 | 1982 | 288 | 111 | 13248 | 2026 | 318 | 119 | 11443 | 2039 | 352 | 128 | 9810 | 2054 | 385 | 135 | |
| 35 | 76.1 | 16380 | 2085 | 301 | 114 | 14600 | 2134 | 331 | 122 | 12659 | 2155 | 365 | 130 | 10925 | 2176 | 397 | 137 | |
| 40 | 84.4 | 17958 | 2190 | 314 | 117 | 16021 | 2244 | 344 | 125 | 13958 | 2274 | 378 | 133 | 12118 | 2301 | 410 | 140 | |
| 45 | 93.2 | 19620 | 2299 | 328 | 120 | 17512 | 2356 | 358 | 128 | 15339 | 2398 | 392 | 135 | 13390 | 2427 | 424 | 142 | |
| 50 | 103.0 | 21366 | 2410 | 343 | 123 | 19071 | 2470 | 373 | 131 | 16803 | 2524 | 407 | 138 | 14740 | 2556 | 438 | 145 | |
| 55 | 113.0 | 23196 | 2523 | 359 | 126 | 20700 | 2586 | 389 | 134 | 18350 | 2654 | 423 | 141 | - | - | - | - | |

Return gas temp. 40°F, 5°F sub cooling

Specifications: AWA9511ZXNC

| | |
|------------------------|----------------------------|
| Model | AWA9511ZXNC |
| Nominal Volts-Hz-Ph | 208-230/60/1; 200-220/50/1 |
| Unit Bill of Material | 2B1138-1 |
| Voltage Range | 187 to 253 |
| Min. Circuit Ampacity | 14.9 Amps |
| Max. Fuse Size | 25 Amps |
| Compressor Model | AWA9490ZXN |
| Comp. Bill of Material | AW616ET-111-P2 |
| Compressor RLA/LRA | 10.7 / 52.0 Amps |
| Overload | Internal |
| Fan Motor | 810S050A99 |
| Fan RLA | 1.30 Amps |
| Fan Control Switch | N/A |
| Fan Blade | 51568-1 |
| Fan Guard | 70831 |
| Condenser | 50857-1 |
| Unit Drawing | SU1918 |
| Electrical Drawing | 91028-1 |

| | |
|---------------------------|-------------------------------|
| Accumulator | N/A |
| Receiver Tank | 51081-1 |
| Liquid Rotolock Valve | 31581-1 (3/8" Sweat Rotolock) |
| Suction Rotolock Valve | 31529-1 (7/8" Sweat Rotolock) |
| Pressure Control | 84087 - Dual Pressure |
| Capacitor Cabinet | AE1397-045 |
| Relay | 820ARR3H23 |
| Start Capacitor | 85PS330D17 |
| Start Capacitor Rating | 145-175 μ F / 330V |
| Run Capacitor | 85PR370F17 OR ...F48 |
| Run Cap. Rating | 35 μ F / 370V |
| Process Valve | N/A |
| Crankcase Heater | 91022-1 (230 Volt) |
| Low Side Design Pressure | 181 PSIG |
| High Side Design Pressure | 450 PSIG |

