

AVA2510ZXTXC

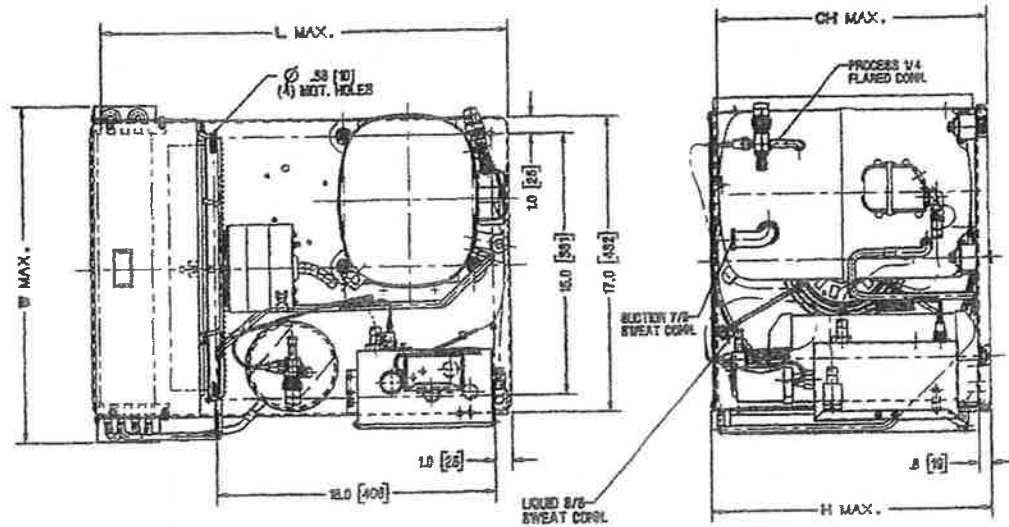
Jan 10, 1999

Revision 2003



# TECUMSEH HERMETIC CONDENSING UNITS

MODEL AVA2510ZXTXC (B/M 2C2117-9) R-404A 2 1/2 HP AIR COOLED



NOTE: DIMENSIONING = INCHES [MILLIMETERS]

POE

Model	Dimensions				*Line Connection		Pumpdown 90 ° F 90% Full	Air CFM	Oil Chg oz.	Gr. Wt. Lbs.
	L	W	H	CH	Suct.	Liq.				
AVA2510ZXTXC	24.0	19.4	16.2	14.6	7/8S	3/8S	10.8#	840	54	130

\*F=Flare, S=Solder, RF or RS= Rotolock Valve with Flare or Solder Connections  
Factory charge: 20 psig nitrogen - MUST BE EVACUATED 60 HZ PERFORMANCE

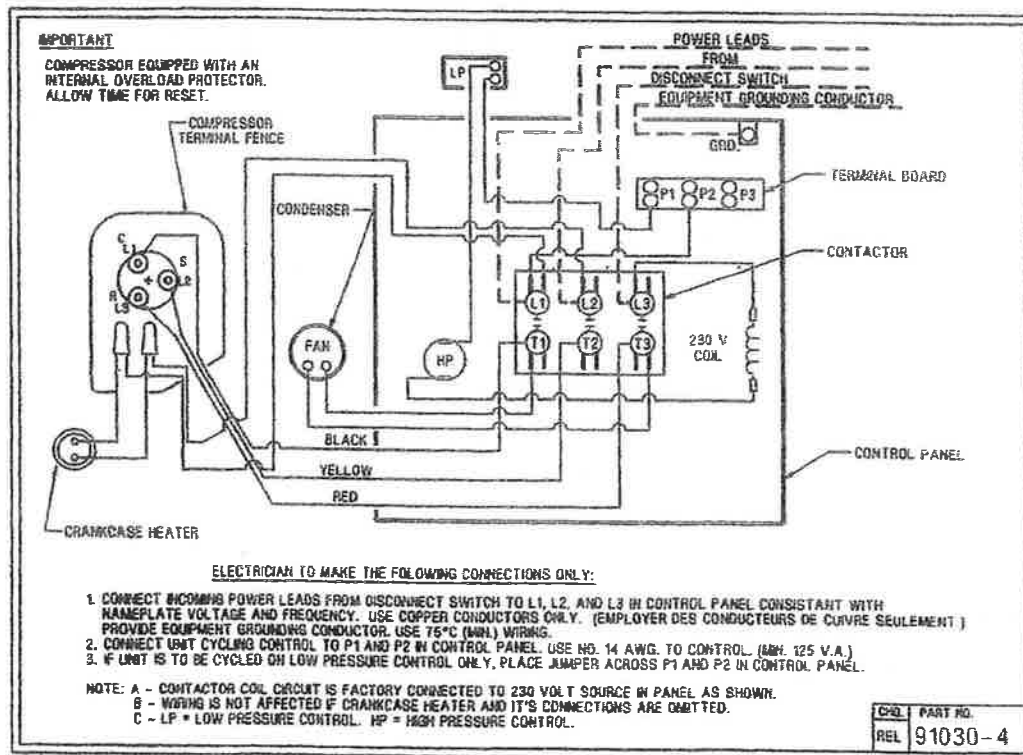
Approved Evap. Range		Ambient								
		90 ° F			100 ° F			110 ° F		
°F	PSIG	BTUH	Watts	Head	BTUH	Watts	Head	BTUH	Watts	Head
-40	4.3	3592	1522	237	2884	1486	267	2329	1370	303
-35	6.8	4675	1703	246	3839	1655	276	3088	1558	312
-30	9.6	5751	1894	256	4785	1839	287	3856	1758	321
-25	12.6	6822	2097	267	5721	2037	298	4633	1971	332
-20	16.0	7887	2311	278	6647	2250	310	5417	2196	344
-15	19.6	8946	2536	291	7564	2477	323	6210	2434	357
-10	23.6	9999	2772	305	8471	2719	337	7011	2684	370
-5	27.9	11046	3019	319	9368	2976	352	7820	2947	385
0	32.6	12088	3277	335	10256	3248	368	8638	3222	401
5	37.7	13123	3546	351	11135	3534	385	9463	3510	418

Return gas temp. 40 ° F, 5 ° F subcooling

Date: January 2003  
Unit Catalog Update

**SPECIFICATIONS** AVA2510ZXTXC  
 Nominal Voltage 230/200-3  
 Unit B/M 2C2117-9  
 Voltage Range 253 to 180  
 Min. Circuit Ampacity 13.7  
 Max. Fuse Size (Amps) 20  
**Compressor Model** AVA2490ZXT  
 Comp. Bill of Material AV195RT-037  
 RLA/LRA 9.9/65.1  
 ESP Overload Internal  
 Control Panel AC1396-6  
 High Pressure Switch 84097-3  
 Control 84026-5 (LP)  
 Contactor 91014 (30 AMP-3PH,230V)  
 Fan Motor (OEM) 810S050A99

Fan RLA 1.30 RLA  
 Replacement Motor TFM502  
 Fan Motor Bracket Grd. Mnt.  
 Fan Blade 51568-1  
 Shroud 70727-2  
 Condenser K42-3  
 Fan Guard 70831  
 Receiver Tank 51081-1  
 Receiver Tank Valve 31581-1 (3/8" S) RL  
 O' Ring Gasket 30334  
 Process Valve 31583-1 (1/4" F PV)  
 Optional Outdoor Enclosure TP-201D  
 Crankcase Heater (If Inc) NA  
 Unit Drawing SU1920-8  
 Schematic or Elect. Drawing 91030-4



Some parts listed may be optional or listed as replacement parts.