

AVA2510ZXNXC

Jan 10, 1999

Revision 2003

TECUMSEH HERMETIC CONDENSING UNITS

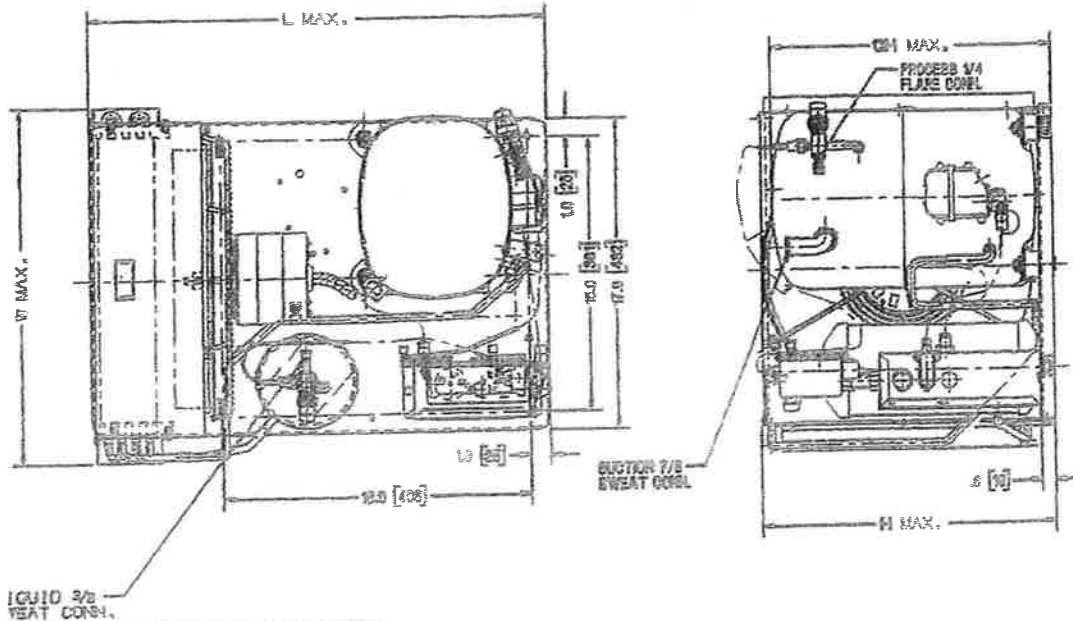


MODEL AVA2510ZXNXC (B/M 2C2116-9)

R-404A

2 1/2 HP

AIR COOLED



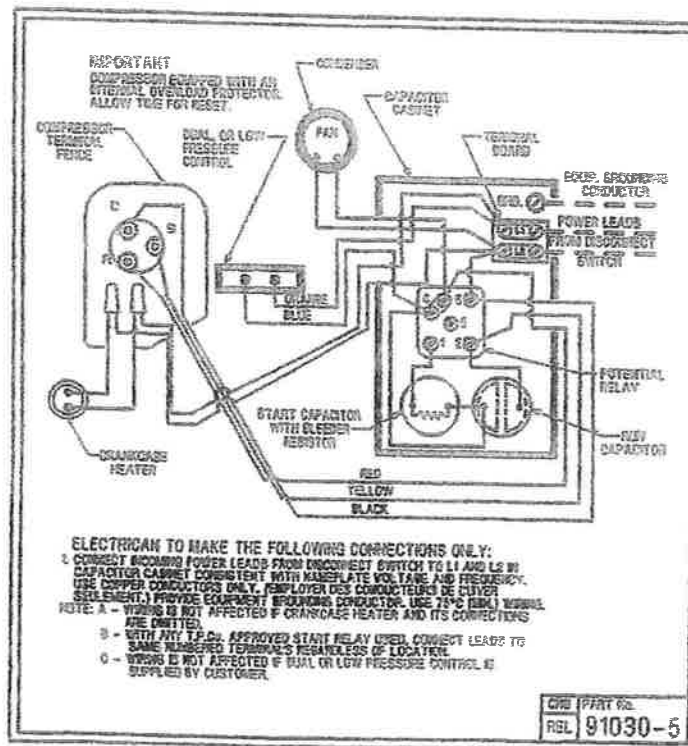
NOTE: DIMENSIONING = INCHES [MILLIMETERS]

Model	Dimensions				*Line Connection		Pumpdown 90° F 90% Full	Air CFM	Oil Chg oz.	Gr. Wt. Lbs.	POE
	L	W	H	CH	Suct.	Liq.					
AVA2510ZXNXC	24.0	19.4	16.2	14.6	7/8S	3/8S	10.8#	840	54	130	
*F=Flare, S=Solder, RF or RS= Rotolock Valve with Flare or Solder Connections Factory charge: 20 psig nitrogen - MUST BE EVACUATED 60 HZ PERFORMANCE											
Approved Evap. Range		Ambient									
		90° F			100° F			110° F			
°F	PSIG	BTUH	Watts	Head	BTUH	Watts	Head	BTUH	Watts	Head	
-40	4.3	3592	1522	237	2884	1486	267	2329	1370	303	
-35	6.8	4675	1703	246	3839	1655	276	3088	1558	312	
-30	9.6	5751	1894	256	4785	1839	287	3856	1758	321	
-25	12.6	6822	2097	267	5721	2037	298	4633	1971	332	
-20	16.0	7887	2311	278	6647	2250	310	5417	2196	344	
-15	19.6	8946	2536	291	7564	2477	323	6210	2434	357	
-10	23.6	9999	2772	305	8471	2719	337	7011	2684	370	
-5	27.9	11046	3019	319	9368	2976	352	7820	2947	385	
0	32.6	12088	3277	335	10256	3248	368	8638	3222	401	
5	37.7	13123	3546	351	11135	3534	385	9463	3510	418	

Return gas temp. 40° F, 5° F subcooling

Date: January 2003
Unit Catalog Update

SPECIFICATIONS	<u>AVA2510ZXNC</u>	Fan Motor (OEM)	<u>810S050A99</u>
Nominal Voltage	<u>230/208-1</u>	Fan RLA	<u>1.30 RLA</u>
Unit B/M	<u>2C2116-9</u>	Replacement Motor	<u>TFM502</u>
Voltage Range	<u>253 to 187</u>	Fan Motor Bracket	<u>Grd. Mnt.</u>
Min. Circuit Ampacity	<u>21.7</u>	Fan Blade	<u>51568-1</u>
Max. Fuse Size (Amps)	<u>35</u>	Shroud	<u>70727-2</u>
Compressor Model	<u>AVA2490ZXN</u>	Condenser	<u>K42-3</u>
Comp. Bill of Material	<u>AV195ET-037</u>	Fan Guard	<u>70831</u>
RLA/LRA	<u>16.3/106.6</u>	Receiver Tank	<u>51081-1</u>
ESP Overload	<u>Internal</u>	Receiver Tank Valve	<u>31581-1 (3/8" S) RL</u>
ESP Relay	<u>P82966</u>	O' Ring Gasket	<u>30334</u>
Capacitor Cabinet	<u>AE1397-036</u>	Process Valve	<u>31583-1 (1/4" F PV)</u>
Start Capacitor	<u>85PS330D17</u>	Optional Outdoor Enclosure	<u>TP-201D</u>
Rating	<u>145-175MFD/330V</u>	Crankcase Heater (If Inc)	<u>NA</u>
Run Capacitor	<u>85PR440E65/P85E85</u>	Unit Drawing	<u>SU1920-7</u>
Rating	<u>45MFD/440V</u>	Schematic or Elect. Drawing	<u>91030-5</u>
Control	<u>84087 (Dual)</u>		



Some parts listed may be optional or listed as replacement parts.