

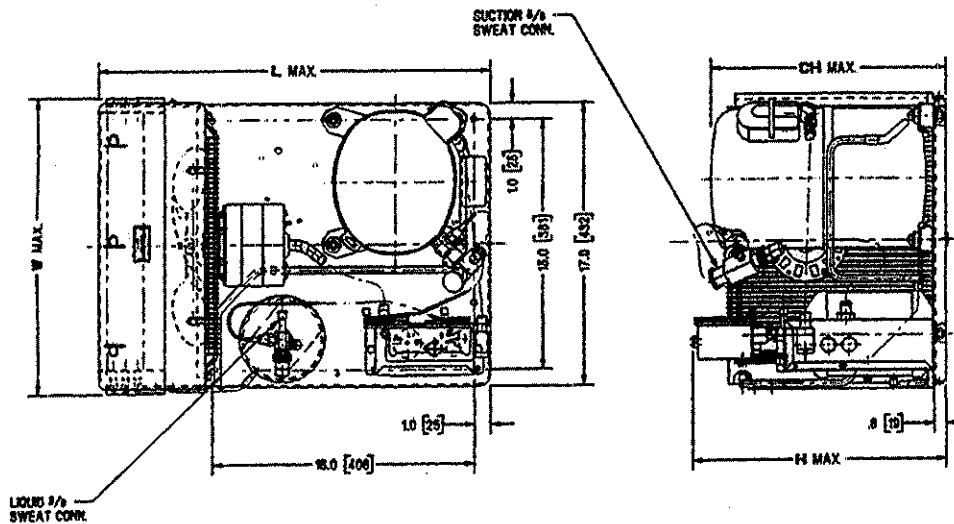
Date: Jan. 10, 1999

Revision 2003



TECUMSEH HERMETIC CONDENSING UNITS

MODEL AWA2448ZXDXC (B/M 2B1118-9) R-404A 1 HP AIR COOLED



NOTE: DIMENSIONING = INCHES (MILLIMETERS)

POE

Model	Dimensions				*Line Connection		Pumpdown 90° F 90% Full	Air CFM	Oil Chg oz.	Gr. Wt. Lbs.
	L	W	H	CH	Suct.	Liq.				
AWA2448ZXDXC	24.0	17.8	15.4	14.3	5/8S	3/8S	6.3#	1615	38	119

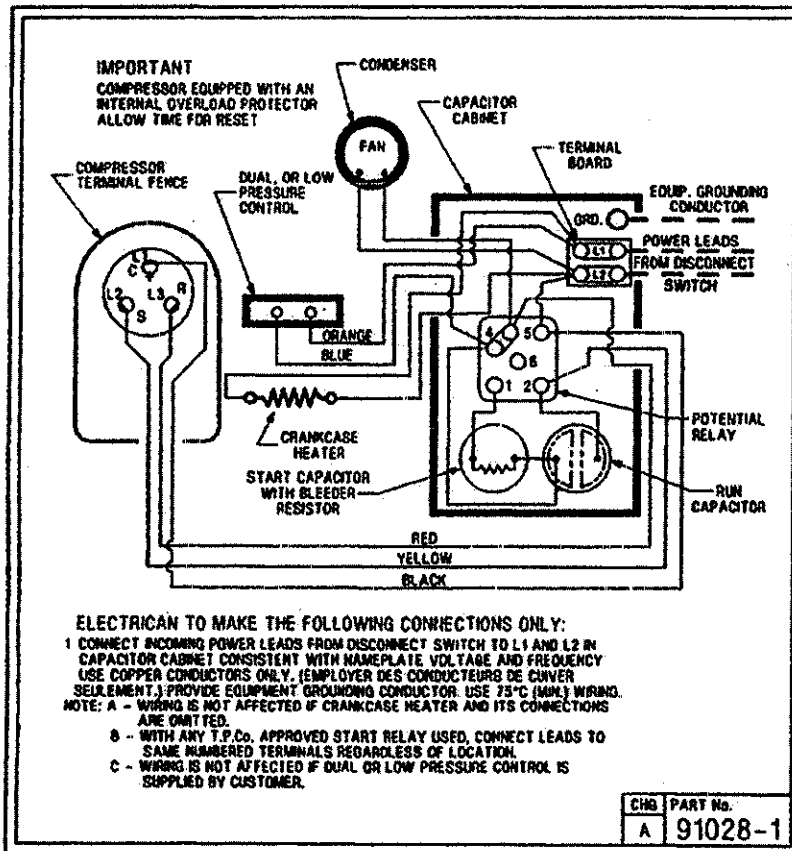
*F=Flare, S=Solder, RF or RS= Rotolock Valve with Flare or Solder Connections
Factory charge: 20 psig nitrogen - **MUST BE EVACUATED** 60 HZ PERFORMANCE

Approved Evap. Range		Ambient								
		90° F			100° F			110° F		
°F	PSIG	BTUH	Watts	Head	BTUH	Watts	Head	BTUH	Watts	Head
-40	4.3	1388	948	228	871	876	261	455	856	290
-35	6.8	1888	1017	232	1358	956	264	901	941	295
-30	9.6	2418	1091	237	1862	1040	269	1359	1029	301
-25	12.6	2978	1171	243	2384	1128	275	1831	1120	308
-20	16.0	3568	1256	250	2922	1219	282	2316	1215	316
-15	19.6	4188	1347	259	3478	1314	290	2814	1312	324
-10	23.6	4838	1444	269	4051	1413	300	3325	1413	334
-5	27.9	5517	1545	280	4641	1515	311	3848	1516	345
0	32.6	6227	1653	292	5249	1622	324	4385	1623	356
+5	37.7	6966	1765	306	5874	1732	337	4935	1733	368
+10	43.2	7736	1883	321	6516	1846	352	5497	1846	382

Return gas temp. 45 ° F, 5 ° F subcooling

SPECIFICATIONS	<u>AWA2448ZDXC</u>
Nominal Voltage	<u>230/208-1</u>
Unit B/M	<u>2B1118-9</u>
Voltage Range	<u>253 to 187</u>
Min. Circuit Ampacity	<u>12.0</u>
Max. Fuse Size (Amps)	<u>15</u>
Compressor Model	<u>AWA2440ZXD</u>
Comp. Bill of Material	<u>AW610ET-111</u>
RLA/LRA	<u>8.7/73.0</u>
ESP Overload	<u>Internal</u>
ESP Relay	<u>P82965</u>
Capacitor Cabinet	<u>AE1397-031</u>
Start Capacitor	<u>85PS330D17</u>
Rating	<u>145-175MFD/330V</u>
Run Capacitor	<u>85PR370F17/P85E74</u>
Rating	<u>35MFD/370V</u>
Control	<u>84087 (Dual)</u>

Fan Motor (OEM)	<u>810S037B01</u>
Fan RLA	<u>1.10 RLA</u>
Replacement Motor	<u>TFM372</u>
Fan Motor Bracket	<u>Grd. Mnt.</u>
Fan Blade	<u>51563</u>
Shroud	<u>70736-1</u>
Condenser	<u>K42-4</u>
Fan Guard	<u>71062</u>
Receiver Tank	<u>51081</u>
Receiver Tank Valve	<u>31581-1 (3/8" S) RL</u>
Suction Rotolock	<u>31531-1 (5/8"S) RL</u>
O' Ring Gasket	<u>30334</u>
Optional Outdoor Enclosure	<u>IP-201D</u>
Crankcase Heater (If Inc)	<u>NA</u>
Unit Drawing	<u>SU1918-11</u>
Schematic or Elect. Drawing	<u>91028-1</u>



Some parts listed may be optional or listed as replacement parts.