



# Tecumseh Products Company Hermetic Condensing Units

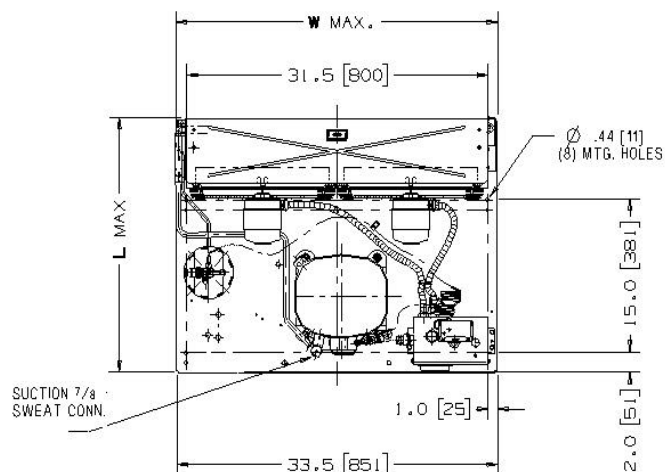
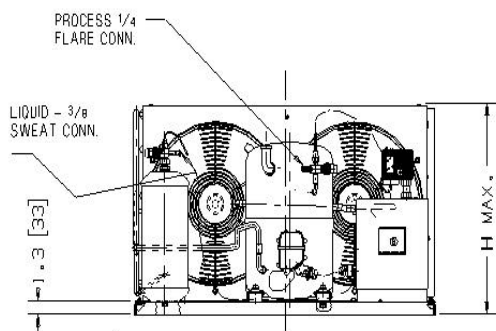
REV 3

Model: AVA2515ZXTXC

R404-A

3 1/2 HP

AIRCOOLED



Note: Dimensioning = Inches [mm]

POE

Model	Dimensions, inches				Line Connection*		Pumpdown	Air	Oil Ch	Gr. Wt.
	L	W	H	CH	Suction	Liquid	90 °F 90%	SCFM	Oz.	Lbs.
AVA2515ZXTXC	25.0	33.48	19.5	14.6	7/8"S	3/8"S	12	1600	54	210

\* F = Flare, S = Solder, RF or RS = Rotolock with Flare or Solder Connections, C = Compression Fitting

Factory charge: 20 PSIG Nitrogen – **MUST BE EVACUATED**

## 60 Hz Performance

Evaporator	Ambient Temps																	
	80°F					90°F					100°F				110°F			
	°F	PSIG	BTUH	Watts	Head Cond T	BTUH	Watts	Head Cond T	BTUH	Watts	Head Cond T	BTUH	Watts	Head Cond T	BTUH	Watts	Head Cond T	
-40	5.5	6391	1957	200	88	5131	1869	231	98	3359	1662	262	107					
-35	8.0	7761	2165	204	89	6404	2083	234	99	4762	1928	266	108					
-30	10.7	9271	2386	208	91	7791	2311	239	100	6211	2202	271	110	3655	1722	304	118	
-25	14.0	10922	2619	214	93	9291	2554	245	102	7705	2483	277	111	5144	2073	310	119	
-20	17.1	12714	2863	221	95	10905	2811	252	104	9244	2772	283	113	6661	2424	317	121	
-15	19.3	14645	3121	229	97	12633	3082	259	106	10830	3068	291	115	8206	2775	325	123	
-10	24.5	16718	3390	237	99	14475	3367	268	108	12461	3372	301	117	9779	3126	334	125	
-5	28.8	18930	3671	247	102	16431	3667	279	111	14138	3683	311	119	11381	3477	343	127	
0	33.5	21283	3965	258	105	18500	3981	290	114	15861	4002	322	122	13011	3828	354	129	
5	36.5	23777	4270	269	108	20683	4309	302	117	17629	4328	334	125	14669	4179	366	132	
10	43.7	26411	4588	282	111	22980	4652	316	120	19443	4662	348	128	16356	4530	378	135	

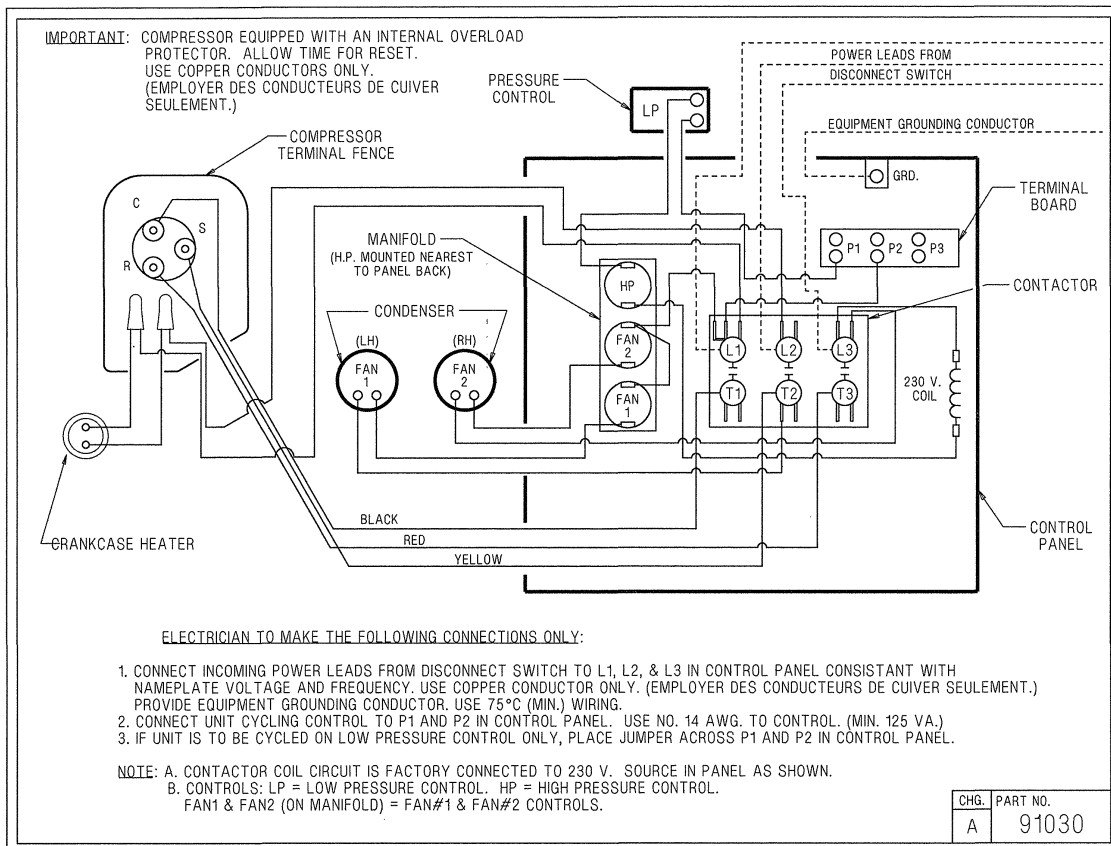
Return gas temp. 40°F, 5°F sub cooling

**Specifications:**

<b>Model</b>	<b>AVA2515ZXTXC</b>
Nominal Volts-Hz-Ph	3-60-200/230
Unit Bill of Material	2B3145-9
Voltage Range	180 to 253
Min. Circuit Ampacity	16.6
Max. Fuse Size (amps)	25
Compressor Model	AVA2512ZXT
Comp. Bill of Material	AV180RT-012
Alt. Comp. Bill of Mat.	-----
Compressor RLA/LRA	11./ 65.1
Overload	Internal
Fan Motor (2)	810S050A99
Fan RLA	1.3
Fan Blade (2)	51568-1
Condenser	50858
Dbf. Fan Shroud	70648-2
Unit Drawing	SU1920-4
Electrical Drawing	91030

Fan Guard (2)	70831
Contactor	91014(30AMP, 3PH-230V)
Control Panel	AC1390-6
Pressure Control	High 84095-2,Low 84026-5
Fan Switch	84096-2 and 84096-1
Receiver Tank	51081-1
Rec. Tank RL Valve	31581-1 (3/8" S)
Process Valve	31583-1 (1/4" F)
O'Ring Gasket	30334

Optional Outdoor Enclosure-TP-241D



S.E.