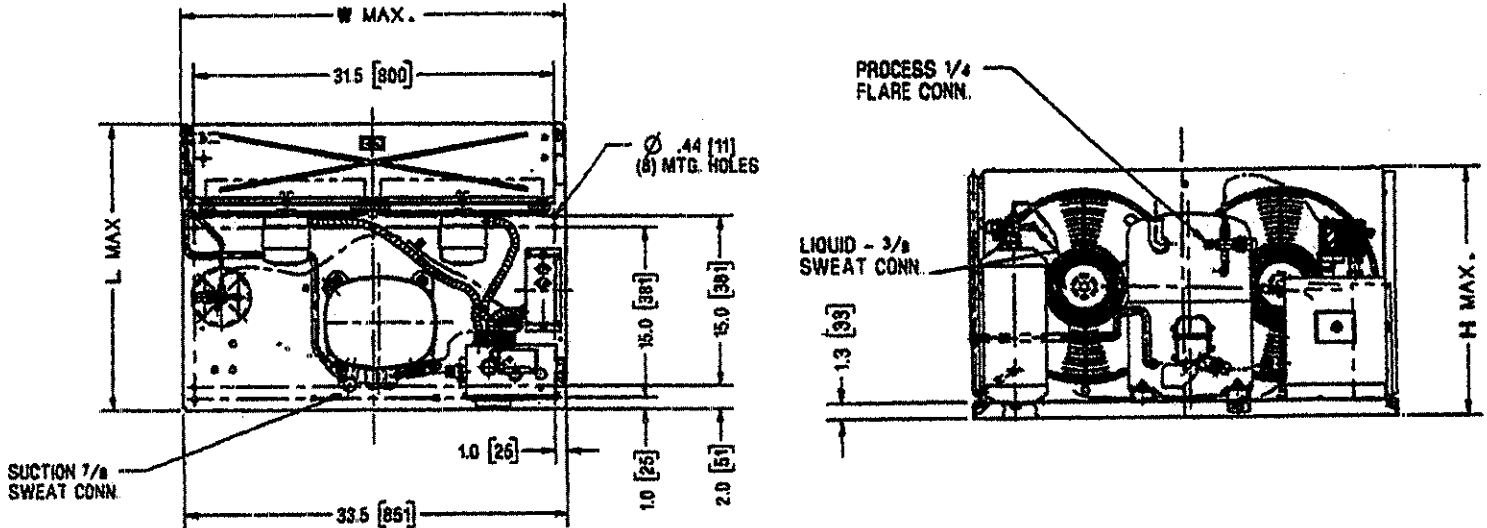




TECUMSEH HERMETIC CONDENSING UNITS

MODEL AVA2515ZXNXC (2B3144-9) R-404A 4 HP AIR COOLED



NOTE: DIMENSIONING = INCHES [MILLIMETERS]

Model	Dimensions				*Line Connection		Pumpdown 90 ° F 90% Full	Air CFM	Oil Chg oz.	Gr. Wt. Lbs.
	L	W	H	CH	Suct.	Liq.				
AVA2515ZXNXC	25.0	33.6	19.5	14.6	7/8 S	3/8 S	12#	1596	54	130

*F=Flare, S=Solder, RF or RS= Rotolock Valve with Flare or Solder Connections
Factory charge: 20 psig nitrogen – **MUST BE EVACUATED** 60 HZ PERFORMANCE

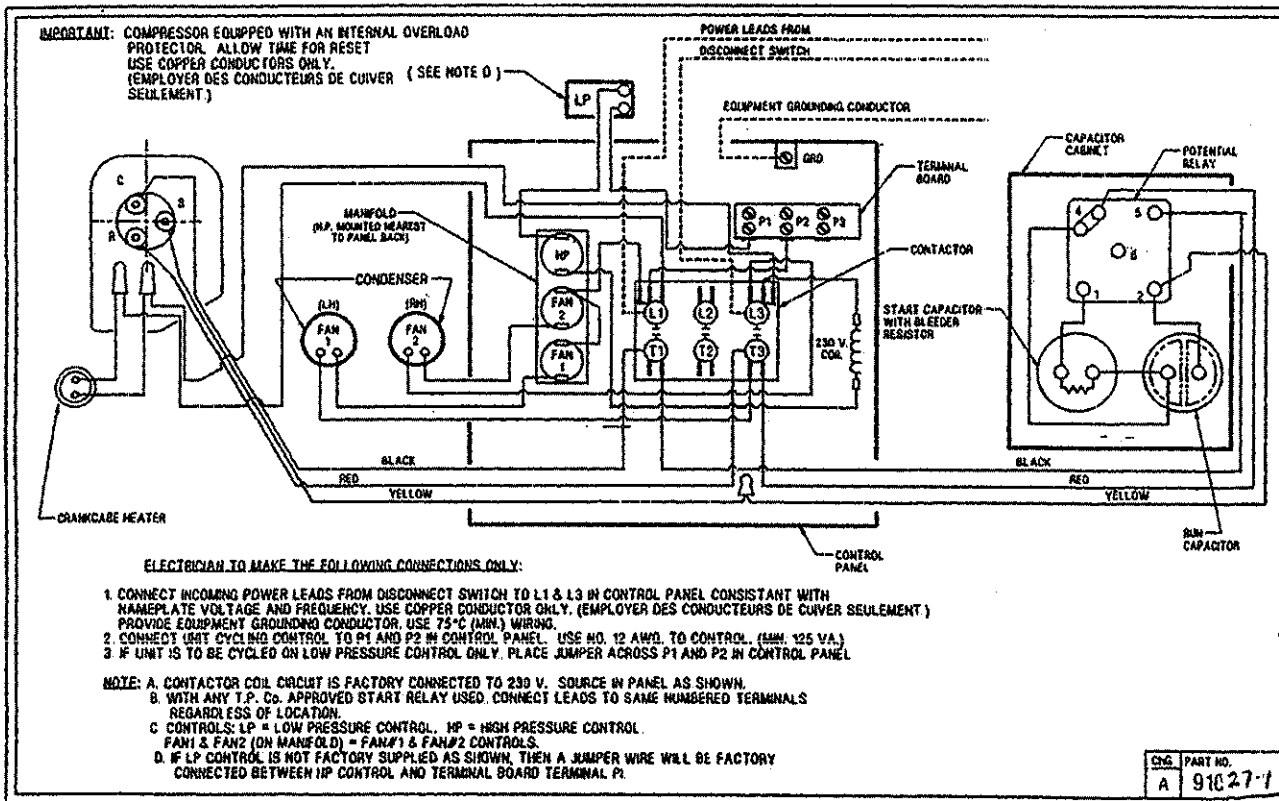
Approved Evap. Range		Ambient								
		90° F			100° F			110° F		
°F	PSIG	BTUH	Watts	Head	BTUH	Watts	Head	BTUH	Watts	Head
-40	5.5	5131	1869	231						
-35	8.0	6404	2083	234	4762	1928	266			
-30	10.7	7791	2311	239	6211	2202	271			
-25	14.0	9291	2554	245	7705	2483	277	5144	2073	310
-20	17.1	10905	2811	252	9244	2772	283	6661	2424	317
-15	19.3	12633	3082	259	10830	3068	291	8206	2775	325
-10	24.5	14475	3367	268	12461	3372	301	9779	3126	334
-5	28.8	16431	3667	279	14138	3683	311	11381	3477	343
0	33.5	18500	3981	290	15861	4002	322	13011	3828	354
+5	36.5	20683	4309	302	17629	4328	334	14669	4179	366
+10	43.7	22980	4652	316	19443	4662	348348	16356	4530	378

Return gas temp. 45 ° F, 5 ° F subcooling

SPECIFICATIONS AVA2515ZXNC

Nominal Voltage	<u>230/208-1</u>
Unit B/M	<u>2B3144-9</u>
Voltage Range	<u>253 to 187</u>
Min. Circuit Ampacity	<u>29.0</u>
Max Fuse Size (Amps)	<u>45</u>
Compressor Model	<u>AVA2512ZXN</u>
Comp. Bill of Material	<u>AV180ET-001</u>
RLA/LRA	<u>20.9/120.3</u>
ESP Overload	<u>Internal</u>
ESP Relay	<u>P82966</u>
Capacitor Cabinet	<u>AE1397-038</u>
Control Panel	<u>AC1390-6</u>
Start Capacitor	<u>85PS330D18</u>
Rating	<u>176-216MFD/330V</u>
Run Capacitor	<u>85PR440E65/P85E85</u>
Rating	<u>45MFD/440V</u>
Fan Switch (s)	<u>84096-1</u> <u>84096-2</u>

High Pressure Switch	<u>84095-2</u>
Control	<u>84026-5 (LP)</u>
Contactor	<u>91014 (30 AMP-3PH,230V)</u>
Fan Motor (OEM)	<u>810S050A99</u>
Fan RLA	<u>1.30 RLA</u>
Replacement Motor	<u>TFM502</u>
Fan Motor Bracket	<u>Grd. Mnt.</u>
Fan Blade	<u>51568-1 (2 req)</u>
Shroud	<u>70648-2</u>
Condenser	<u>K42-17</u>
Fan Guard	<u>70831 (2 req)</u>
Receiver Tank	<u>51081-1</u>
Receiver Tank Valve	<u>31581-1 (3/8" S) RL</u>
O' Ring Gasket	<u>30334</u>
Process Valve	<u>31583-1 (1/4" F PV)</u>
Optional Outdoor Enclosure	<u>TP-241D</u>
Crankcase Heater (If Inc)	<u>NA</u>
Unit Drawing	<u>SU1920-3</u>
Schematic or Elect. Drawing	<u>91027-1</u>



Some parts listed may be optional or listed as replacement parts.