



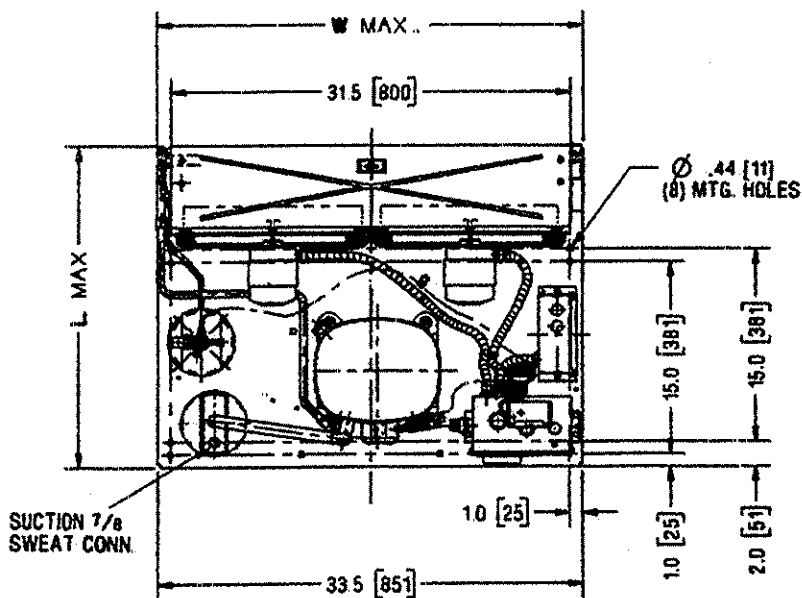
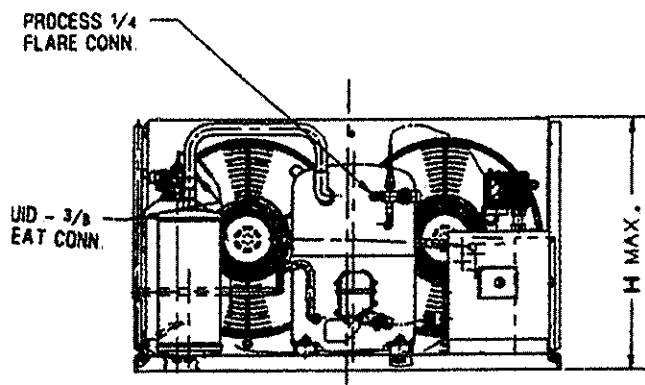
# TECUMSEH HERMETIC CONDENSING UNITS

AVA2512ZXNXM

Date: Jan. 10, 1999

Revision 2003

MODEL AVA2512ZXNXM (B/M 2B3140-9) R-404A 3 HP AIR COOLED



Note: DIMENSIONS = INCHES (MILLIMETERS)

Model	Dimensions				*Line Connection		Pumpdown 90 ° F 90% Full	Air CFM	Oil Chg oz.	Gr. Wt. Lbs.
	L	W	H	CH	Suct.	Liq.				
AVA2512ZXNXM	25.0	33.6	19.5	14.6	7/8S	3/8S	11.6#	1525	54	130

POE

\*F=Flare, S=Solder, RF or RS= Rotolock Valve with Flare or Solder Connections  
Factory charge: 20 psig nitrogen - MUST BE EVACUATED 60 HZ PERFORMANCE

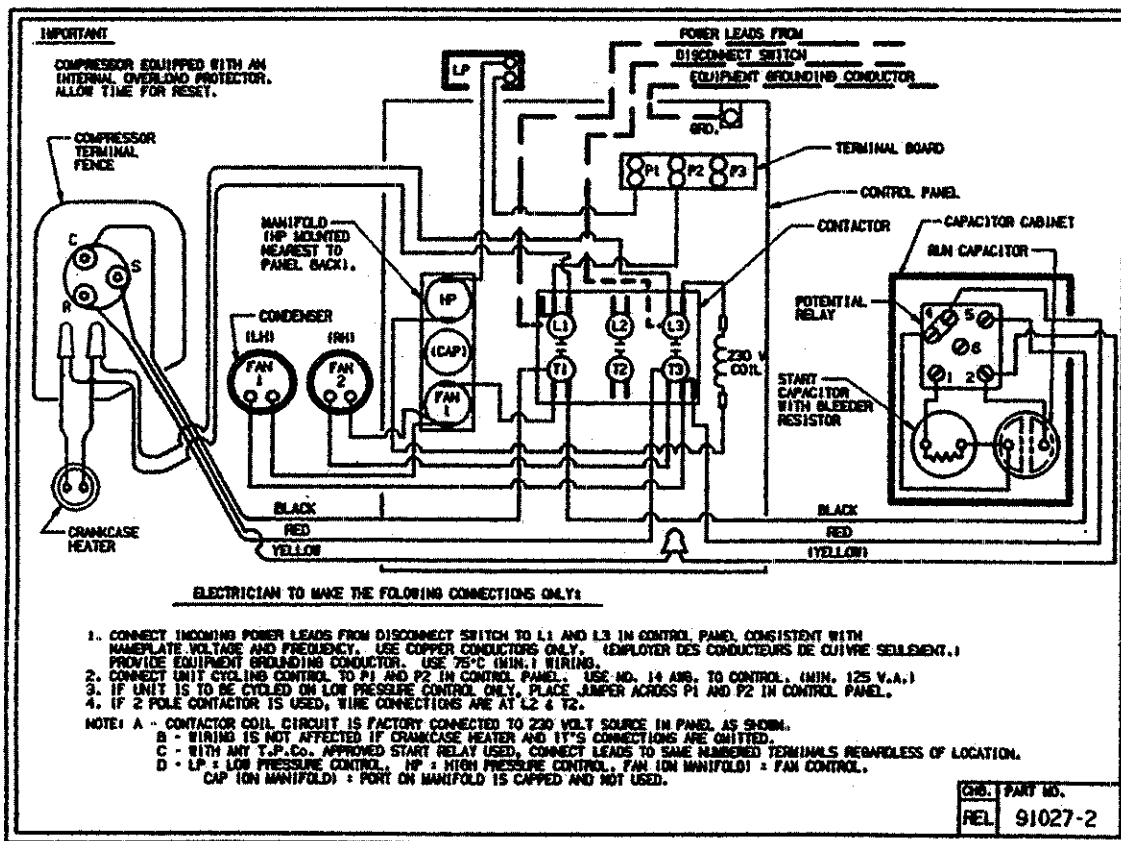
Approved Evap. Range		Ambient								
		90° F			100 °F			110° F		
°F	PSIG	BTUH	Watts	Head	BTUH	Watts	Head	BTUH	Watts	Head
-35	6.8	5313	1828	238	4296	1677	273	3499	1151	300
-30	9.6	6531	2005	244	5387	1863	278	4582	1470	308
-25	12.6	7794	2192	252	6518	2057	285	5678	1779	317
-20	16.0	9102	2389	260	7689	2260	292	6786	2078	326
-15	19.6	10454	2596	269	8900	2471	300	7907	2367	335
-10	23.6	11851	2813	278	10151	2692	309	9041	2646	345
-5	27.9	13292	3040	288	11442	2921	319	10187	2915	355
0	32.6	14778	3277	299	12772	3159	329	11345	3174	366
+5	37.7	16309	3524	311	14142	3405	340	12517	3423	378
+10	43.2	17884	3781	323	15553	3661	353	13701	3662	389

Return gas temp 45 ° F, 5 ° F subcooling

**SPECIFICATIONS** AVA2512ZXNXM

Nominal Voltage	<u>230/208-1</u>
Unit B/M	<u>2B3140-9</u>
Voltage Range	<u>253 to 187</u>
Min. Circuit Ampacity	<u>22.8</u>
Max. Fuse Size (Amps)	<u>35</u>
<b>Compressor Model</b>	<u>AVA2490ZXN</u>
Comp. Bill of Material	<u>AV195ET-037</u>
RLA/LRA	<u>16.3/106.6</u>
ESP Overload	<u>Internal</u>
ESP Relay	<u>P82966</u>
Capacitor Cabinet	<u>AE1397-015</u>
Control Panel	<u>AC1390-10</u>
Start Capacitor	<u>85PS330D17</u>
Rating	<u>145-175MFD/330V</u>
Run Capacitor	<u>85PR440E65/P85E85</u>
Rating	<u>45MFD/440V</u>
Fan Switch (s)	<u>84096-1</u>
High Pressure Switch	<u>84095-2</u>

Control	<u>84026-5 (LP)</u>
Contactor	<u>91014 (30 AMP-3PH,230V)</u>
Fan Motor (OEM)	<u>810S037B01</u>
Fan RLA	<u>1.10 RLA</u>
Replacement Motor	<u>TFM372</u>
Fan Motor Bracket	<u>Grd. Mnt.</u>
Fan Blade	<u>51533-2 (2 req)</u>
Shroud	<u>70648-2</u>
Condenser	<u>K42-13</u>
Fan Guard	<u>70831 (2 req)</u>
Receiver Tank	<u>51081-1</u>
Receiver Tank Valve	<u>31581-1 (3/8" S) RL</u>
O' Ring Gasket	<u>30334</u>
Process Valve	<u>31583-1 (1/4" F PV)</u>
Optional Outdoor Enclosure	<u>TP-241D</u>
Crankcase Heater (If Inc)	<u>NA</u>
Accumulator	<u>TK00042000</u>
Unit Drawing	<u>SU1920</u>
Schematic or Elect. Drawing	<u>91027-2</u>



Some parts listed may be optional or listed as replacement parts.