



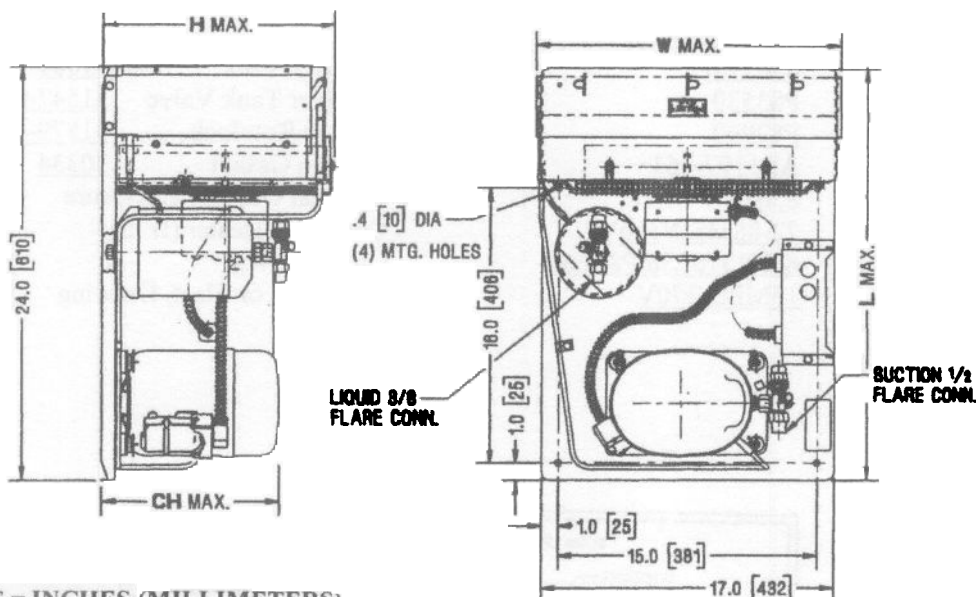
TECUMSEH HERMETIC CONDENSING UNITS

AKA9463ZXDXC

March 10, 2000

Revision 2003

MODEL AKA9463ZXDXC (B/M 2B777-1) R-404A 3/4 HP AIR COOLED



NOTE DIMENSIONS = INCHES (MILLIMETERS)

Model	Dimensions				*Line Connection		Pumpdown 90° F 90% Full	Air CFM	Oil Chg oz.	Gr. Wt. Lbs.
	L	W	H	CH	Suct.	Liq.				
AKA9463ZXDXC	24.3	18.0	14.0	8.8	1/2F	3/8F	6.0	600	17	84

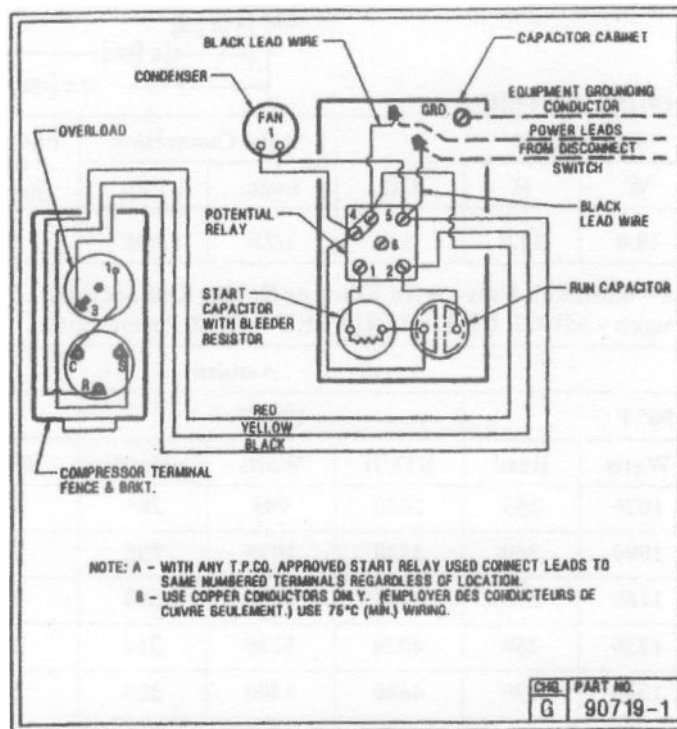
*F=Flare, S=Solder, RF or RS= Rotolock Valve with Flare or Solder Connections
Factory charge: 20 psig nitrogen - MUST BE EVACUATED 60 HZ Performance

Approved Evap. Range		Ambient								
		90° F			100° F			110° F		
°F	PSIG	BTUH	Watts	Head	BTUH	Watts	Head	BTUH	Watts	Head
-10	23.9	3190	1020	255	2650	995	285	2170	950	315
-5	28.2	3700	1090	260	3120	1035	295	2580	1035	325
0	32.8	4200	1160	270	3550	1150	300	2980	1120	335
5	37.9	4720	1230	280	4020	1225	310	3380	1210	345
10	43.3	5230	1300	290	4480	1300	320	3780	1300	355
15	49.2	5750	1380	295	4930	1390	330	4180	1390	365
20	55.5	6280	1450	305	5380	1470	340	4600	1480	375
25	62.2	6900	1530	315	5980	1550	350	5100	1575	385
30	69.5	7650	1610	325	6570	1640	365	5600	1670	395
35	77.2	8200	1690	340	7150	1730	375	6150	1770	405
40	85.5	8900	1780	350	7700	1830	385	---	---	---

Based on 40° F return gas temp., 5° F subcooling

Date: January 2003
Unit Catalog Update

SPECIFICATIONS	<u>AKA9463ZDXC</u>	Fan Motor (OEM)	<u>810S037B01</u>
Nominal Voltage	<u>230/208-1</u>	Fan RLA	<u>1.10 RLA</u>
Unit B/M	<u>2B777-1</u>	Replacement Motor	<u>TFM372</u>
Voltage Range	<u>253 to 187</u>	Fan Motor Bracket	<u>Grd. Mnt.</u>
Min. Circuit Ampacity	<u>9.6</u>	Fan Blade	<u>51563</u>
Max. Fuse Size (Amps)	<u>20</u>	Shroud	<u>70736-1</u>
Compressor Model	<u>AKA9462ZXD</u>	Condenser	<u>K42-4</u>
Comp. Bill of Material	<u>AK172ET-038</u>	Fan Guard	<u>71062</u>
RLA/LRA	<u>6.8/34.0</u>	Receiver Tank	<u>51081</u>
ESP Overload	<u>P83530</u>	Receiver Tank Valve	<u>31547-8 (3/8" F) RL</u>
ESP Relay	<u>P82960</u>	Suction Rotolock	<u>31579-1 (1/2" F) RL</u>
Capacitor Cabinet	<u>AE1197-063</u>	O' Ring Gasket	<u>30334</u>
Start Capacitor	<u>85685</u>	Optional Outdoor Enclosure	<u>TP-181D</u>
Rating	<u>72-88MFD/330V</u>	Crankcase Heater (If Inc)	<u>N.A</u>
Run Capacitor	<u>85PR370E36/P85E69</u>	Unit Drawing	<u>SU1909-25</u>
Rating	<u>15MFD/370V</u>	Schematic or Elect. Drawing	<u>90719-1</u>



Some parts listed may be optional or listed as replacement parts.